

## AA 45/5 T2 2,2kW (255120106)

### GENERAL DATA



#### HIGH PRESSURE WITH ALUMINIUM BACKWARD IMPELLER

##### MANUFACTURING FEATURES:

- Rolling steel sheet housing.
- Fully welded housing.
- High efficiency simple inlet backward impeller with self-cleaning system manufactured in cast aluminium.
- Polyester powder finishing coat.
- Standard asynchronous squirrel-cage motor with IP-55 protection and class F insulation. Standard voltages 230/400V 50Hz motors up to 4kW and 400/690V 50Hz for higher powers.

- Available positions (to be indicated in case of order): LG270, LG0, LG45, LG90, LG135, LG180, LG225, LG315.
- The indicated codes correspond to the model in position LG270

##### APPLICATIONS:

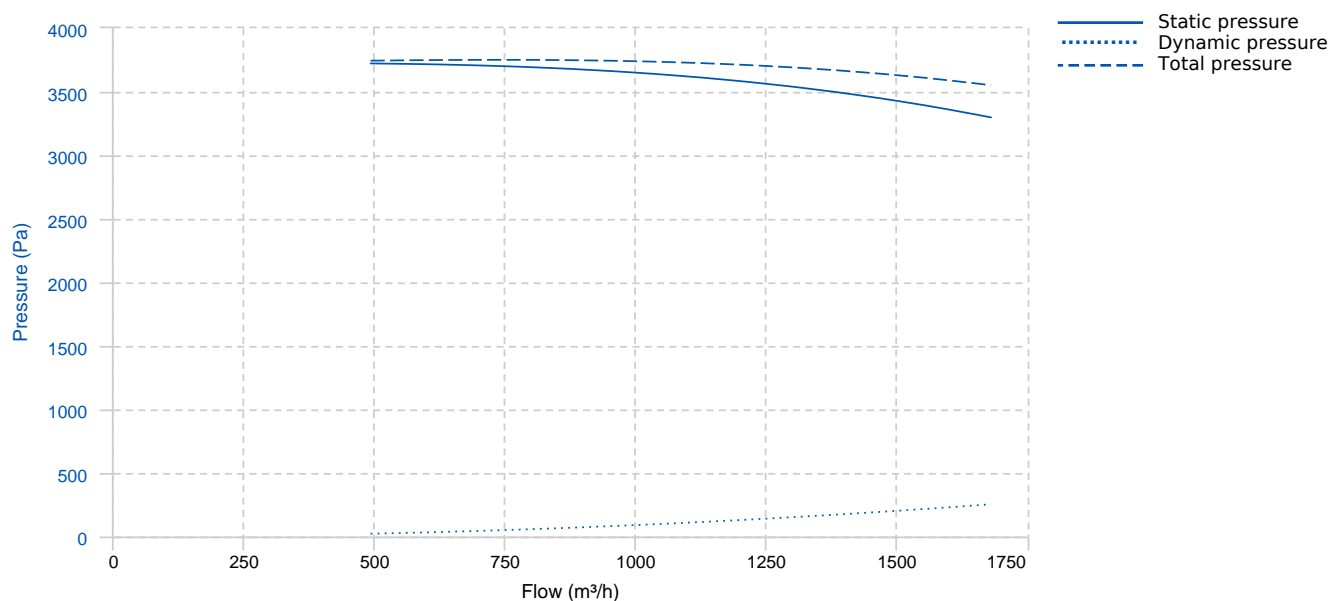
Designed for inline installation, they are suitable for:

- Industrial applications, extraction or injection of air.
- Cooling of machines and parts.
- Clean air transport.
- Exhaust after filters, separators and cyclones.
- Pneumatic transport.
- Maximum working temperature: carried air: 130°C, ambient 60°C.

##### UNDER REQUEST:

- 60Hz fans and special voltages.
- 2 speed motors.

### PERFORMANCE CURVE

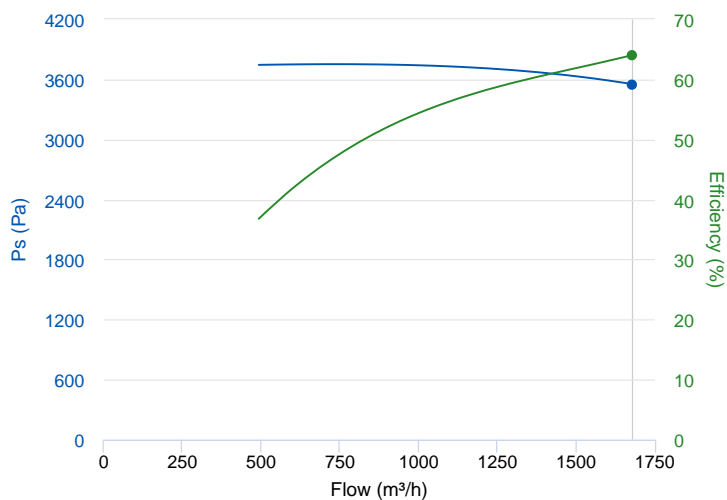


## TECHNICAL DATA

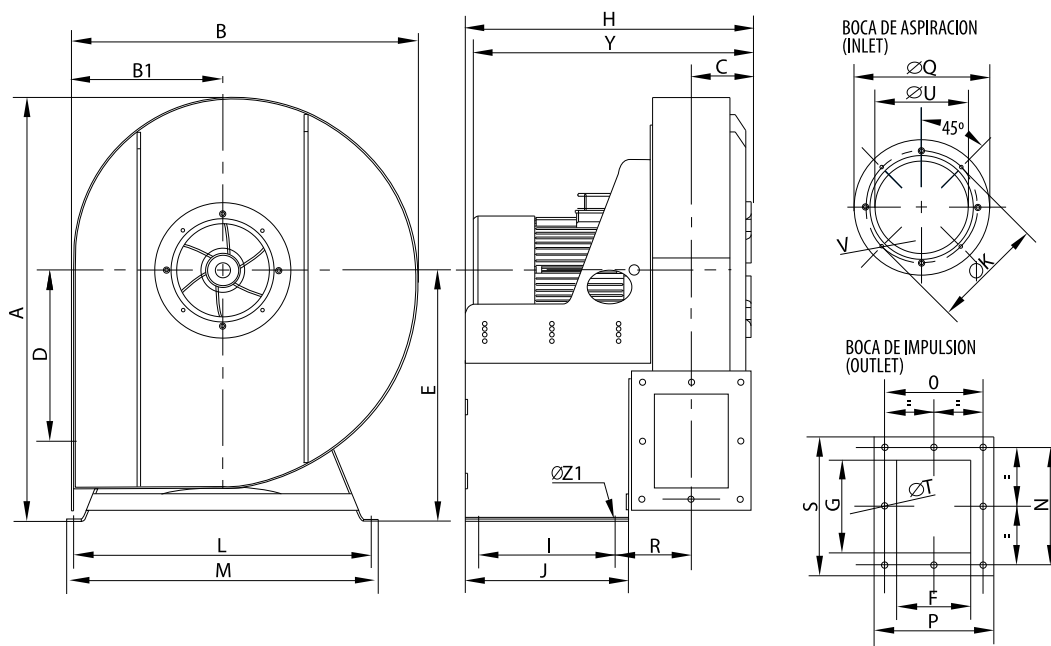
| Fan   |        |                |         |                |                        |               |        |
|-------|--------|----------------|---------|----------------|------------------------|---------------|--------|
| RPM   | 2840   | Approx. weight | 62.5 kg | Max. Flow      | 1690 m <sup>3</sup> /h |               |        |
| Motor |        |                |         |                |                        |               |        |
| Power | 2,2 kW | RPM            | 2840    | I max. (230V)  | 7,97 A                 | I max. (400V) | 4,58 A |
| Size  | 90L    | Approx. weight | 25 kg   | Efficiency (%) | 85.9 %                 | FP            | 0.83   |

## ERP DATA

| Fan data sheet                      |   |                       |
|-------------------------------------|---|-----------------------|
| Fan type                            | Centrifugal fan backward blades with casing |                       |
| Installation category               | B: Inlet free, Ducted outlet                |                       |
| Efficiency category                 | Total                                       |                       |
| The fan has to be installed with VF | No  |                       |
| Motor power (kW)                    | 2.2   |                       |
|                                     | Fan values                                  | ERP Requirements 2015 |
| Max. efficiency (%)                 | 64.06                                       | 57.92                 |
| Efficiency grade (N)                | 70.14                                       | 64                    |
| Pabs (kW)                           | 2.635                                       |                       |
| Flow (m <sup>3</sup> /h)            | 1680  |                       |
| Total pressure (Pa)                 | 3552.83                                     |                       |
| Speed (m/s)                         | 2840  |                       |
| Specific ratio                      | 1.00  |                       |



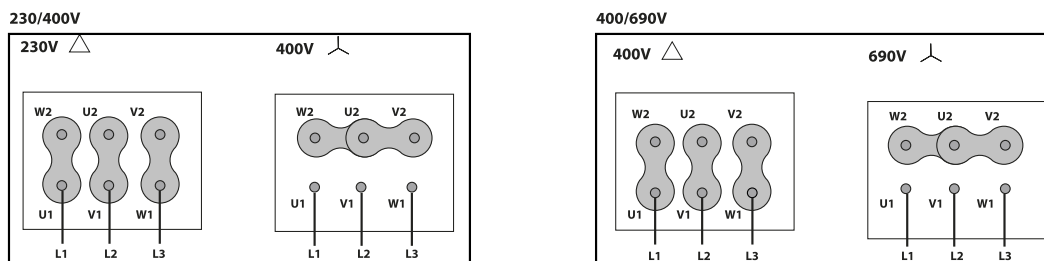
## DIMENSIONS



### Dimensions (mm)

|    |     |    |     |    |       |   |       |     |     |
|----|-----|----|-----|----|-------|---|-------|-----|-----|
| A  | 776 | B  | 635 | B1 | 276,5 | C | 115   | D   | 313 |
| E  | 460 | F  | 135 | G  | 170   | H | 529,5 | I   | 250 |
| J  | 300 | KØ | 205 | L  | 545   | M | 570   | N   | 215 |
| O  | 180 | P  | 219 | QØ | 249   | R | 139,5 | S   | 254 |
| TØ | 11  | UØ | 170 | V  | M6    | Y | 504,5 | Z1Ø | 11  |

## WIRING DIAGRAM



## ACCESSORIES



**SAFETY SWITCH**  
INT 25 3P A  
REF: INT253PA



**INLET PROTECTION GUARD FOR CENTRIFUGAL FANS**  
RA 18/7  
REF: A-253171901



**CIRCULAR OUTLET CONNECTION FLANGE**  
EI 45/5  
REF: 962450112



**ANTI-VIBRATION JOINT**  
JE 45  
REF: 300719201



**OUTLET PROTECTION GUARD**  
RBS 45/5  
REF: A-960000371



**FREQUENCY SPEED CONTROLLER**  
SFC 400 III 5A \*  
REF: SFC400III5



**ANTI-VIBRATION SPRING BLOCK**  
AVS (GENERIC)



**ANTI-VIBRATING FLANGE 400°/2H**  
BA-400 20  
REF: 960002066



**CONNECTION FLANGE**  
AC 175  
REF: 960003205



**FREQUENCY SPEED CONTROLLER**  
SFC 230 I 10A \*  
REF: SFC230I0010

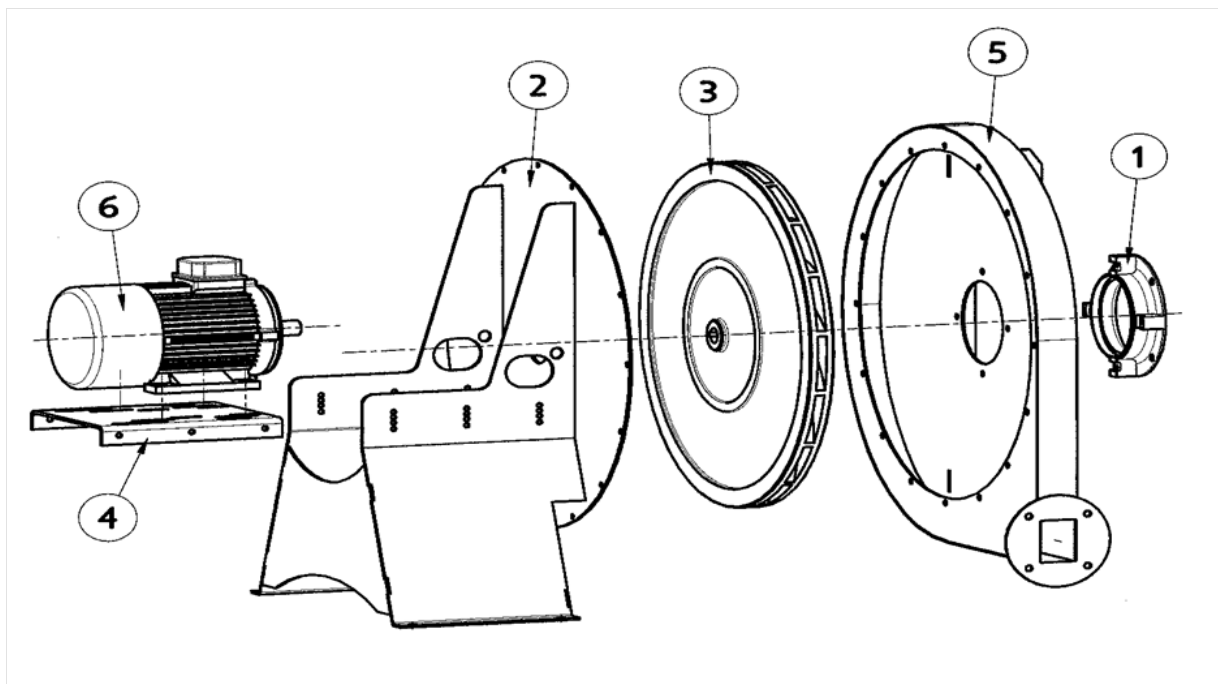


**ANTI-VIBRATION RUBBER BLOCK**  
AVR (GENERIC)



**ACOUSTIC CABINS FOR CENTRIFUGAL FANS**  
AB (GENERIC)

## SPARE PARTS



|   | Code        | Model                           | Qty |
|---|-------------|---------------------------------|-----|
| 1 | R-255121681 | INLET CONE AA 45/5              | x1  |
| 2 | R-255129204 | BASE SUPPORT MOTOR AA45/5       | x1  |
| 3 | R-255123651 | TURBINE AA 45/5 T2 2,2kW LG     | x1  |
| 4 | R-243401752 | MOTOR SUPPORT MBR-MBRF31aI56(B) | x1  |
| 5 | R-255129421 | CASING AA45/5                   | x1  |



|   | Code      | Model                      | Qty |
|---|-----------|----------------------------|-----|
| 6 | 721001053 | MOTOR 2,2kW T2 B3 230/400V | x1  |