

AA 47 T2 1,1kW (255170160)

GENERAL DATA



HIGH PRESSURE WITH ALUMINIUM FORWARD IMPELLER

MANUFACTURING FEATURES:

- Rolling steel sheet housing.
 - Fully welded housing.
 - High efficiency simple inlet forward curved impeller manufactured in cast aluminium.
 - Polyester powder finishing coat.
 - Standard asynchronous squirrel-cage motor with IP-55 protection and class F insulation.
- Standard voltages 230/400V 50Hz motors up to 4kW and 400/690V 50Hz for higher powers.

- Available positions (to be indicated in case of order): LG270, LG0, LG45, LG90, LG135, LG180, LG225, LG315.
- The indicated codes correspond to the model in position LG270

APPLICATIONS:

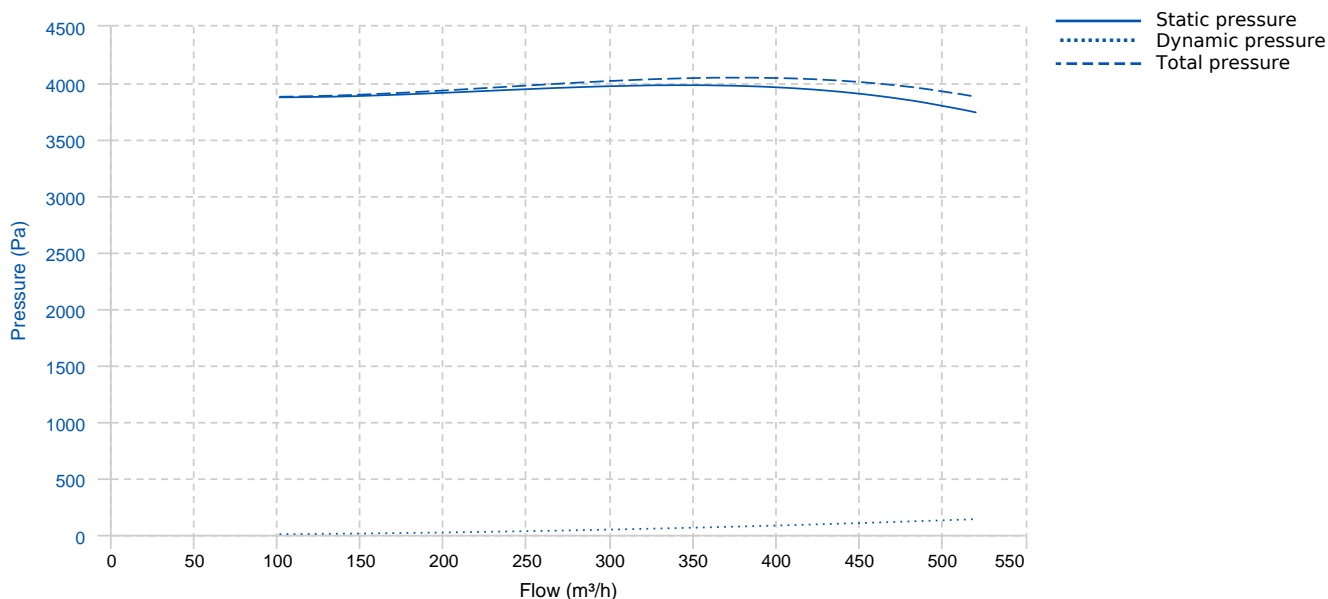
Designed for inline installation, they are suitable for:

- Industrial applications, extraction or injection of air.
- Cooling of machines and parts.
- Clean air transport.
- Exhaust after filters, separators and cyclones.
- Pneumatic transport.
- Maximum working temperature: carried air: 130°C, ambient 60°C.

UNDER REQUEST:

- 60Hz fans and special voltages.
- 2 speed motors.

PERFORMANCE CURVE

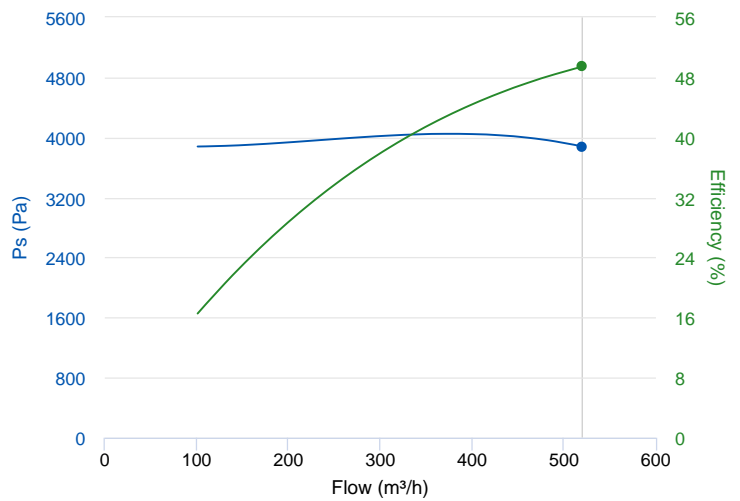


TECHNICAL DATA

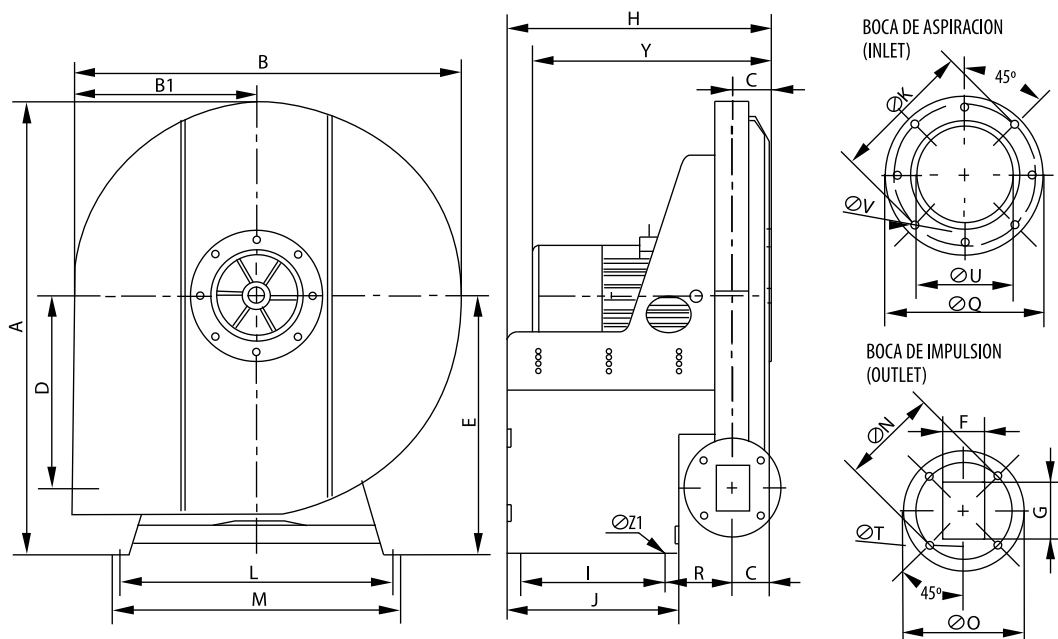
Fan							
RPM	2800	Approx. weight	49.5 kg	Max. Flow	530 m ³ /h		
Motor							
Power	1,1 kW	RPM	2800	I max. (230V)	4,05 A	I max. (400V)	2,33 A
Size	80	Approx. weight	16 kg	Efficiency (%)	82.7 %	FP	0.85

ERP DATA

Fan data sheet		
Fan type	Centrifugal fan radial or forward blades	
Installation category	B: Inlet free, Ducted outlet	
Efficiency category	Total	
The fan has to be installed with VF	No	
Motor power (kW)	1.1	
	Fan values	ERP Requirements 2015
Max. efficiency (%)	49.43	43.6
Efficiency grade (N)	54.83	49
Pabs (kW)	1.406	
Flow (m ³ /h)	520	
Total pressure (Pa)	3880.34	
Speed (m/s)	2800	
Specific ratio	1.00	



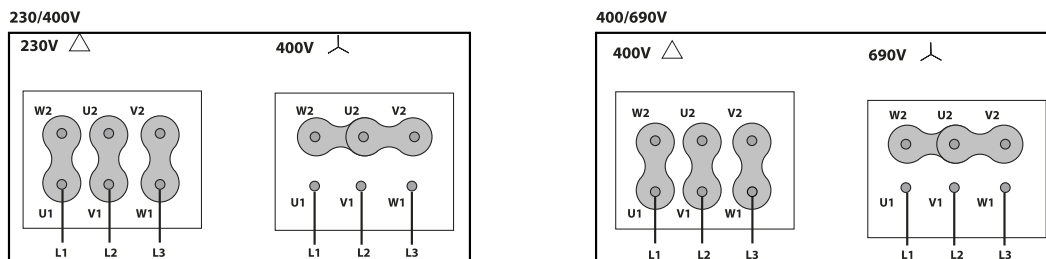
DIMENSIONS



Dimensions (mm)

A	643	B	560	B1	264	C	70	D	275,5
E	365	F	60	G	60	H	372	I	165
J	215	KØ	175	L	355	M	380	NØ	132
OØ	168	QØ	205	R	112	TØ	11	UØ	110
VØ	12	Y	367	Z1	11				

WIRING DIAGRAM



ACCESSORIES



SAFETY SWITCH
INT 25 3P A
REF: INT253PA



INLET PROTECTION GUARD FOR CENTRIFUGAL FANS
RA 16/6
REF: A-253111901



CIRCULAR OUTLET CONNECTION FLANGE
EI 47
REF: 962470111



ANTI-VIBRATION JOINT
JE 45
REF: 300719201



OUTLET PROTECTION GUARD
RBS 47
REF: A-960000374



FREQUENCY SPEED CONTROLLER
SFC 400 III 3,6A *
REF: SFC400III4



ANTI-VIBRATION SPRING BLOCK
AVS (GENERIC)



ANTI-VIBRATING FLANGE 400º/2H
BA-400 15/16
REF: 960002067



CONNECTION FLANGE
AC 150
REF: 960003204



FREQUENCY SPEED CONTROLLER
SFC 230 I 4,2A *
REF: SFC230I004

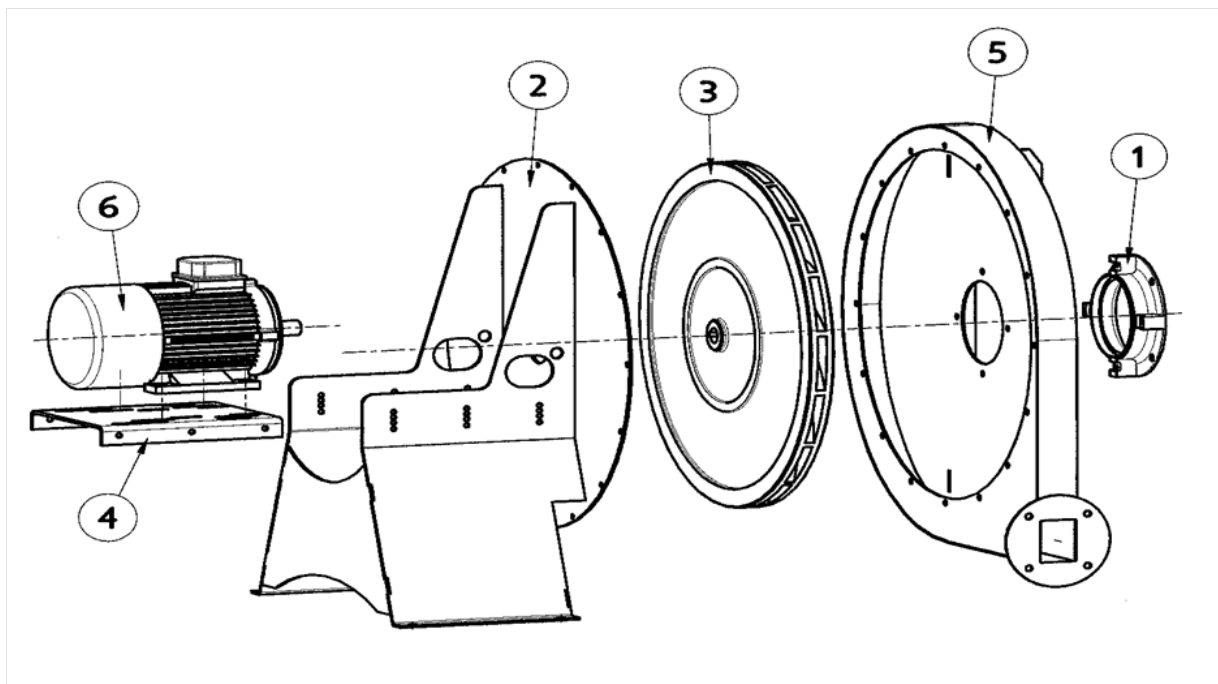


ANTI-VIBRATION RUBBER BLOCK
AVR (GENERIC)



ACOUSTIC CABINS FOR CENTRIFUGAL FANS
AB (GENERIC)

SPARE PARTS



	Code	Model	Qty
1	R-255141681	INLET CONE AA 47	x1
2	R-255149204	BASE SUPPORT MOTOR AA47	x1
3	R-255173651	TURBINE AA 47 T2 1,1kW LG	x1
4	R-255141754	MOTOR SUPPORT AA47-53(T63-80-100)	x1
5	R-255149421	CASING AA47	x1



	Code	Model	Qty
6	721001043	MOTOR 1,1kW T2 B3 230/400V	x1