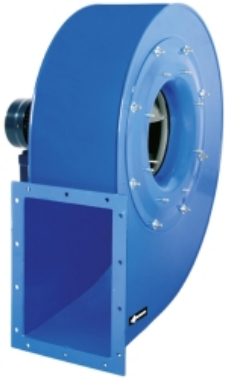


## AAVM/N 560 T2 11kW (std) (502805621)

### GENERAL DATA



#### HIGH PRESSURE WITH BACKWARD IMPELLER

##### MANUFACTURING FEATURES:

- Fan made of Fe360 sheet. The fan paint finish is based on a Qualicoat polyester powder coating stoved at 200°C, with an average film thickness of 70 microns. Average heat resistance of coating is 180°C with peaks of 200°C.
- Fully welded housing.
- High efficiency simple inlet backward impeller with self-cleaning system made of Fe360 sheet statically and dynamically balanced. Impellers are painted with polyester primer that resists temperatures up to 300°C.
- Standard asynchronous squirrel-cage motor with IP-55 protection and class F insulation. Manufactured with standard voltages: 230/400V 50Hz in three phase motors up to 4kW and 400/690V 50Hz for higher powers. IE4 motors for 75kW power or higher.
- It allows adjusting the orientation locally from models 350 to 630. Models sizes from 710 to 1000 size the orientation is fixed.
- Available positions (to be indicated in case of order): LG270, LG0, LG45, LG90, LG135, LG180, LG225, LG315, RD0, RD45, RD90, RD135, RD180, RD225, RD270, RD315.
- The indicated codes correspond to the model in position LG270

##### APPLICATIONS:

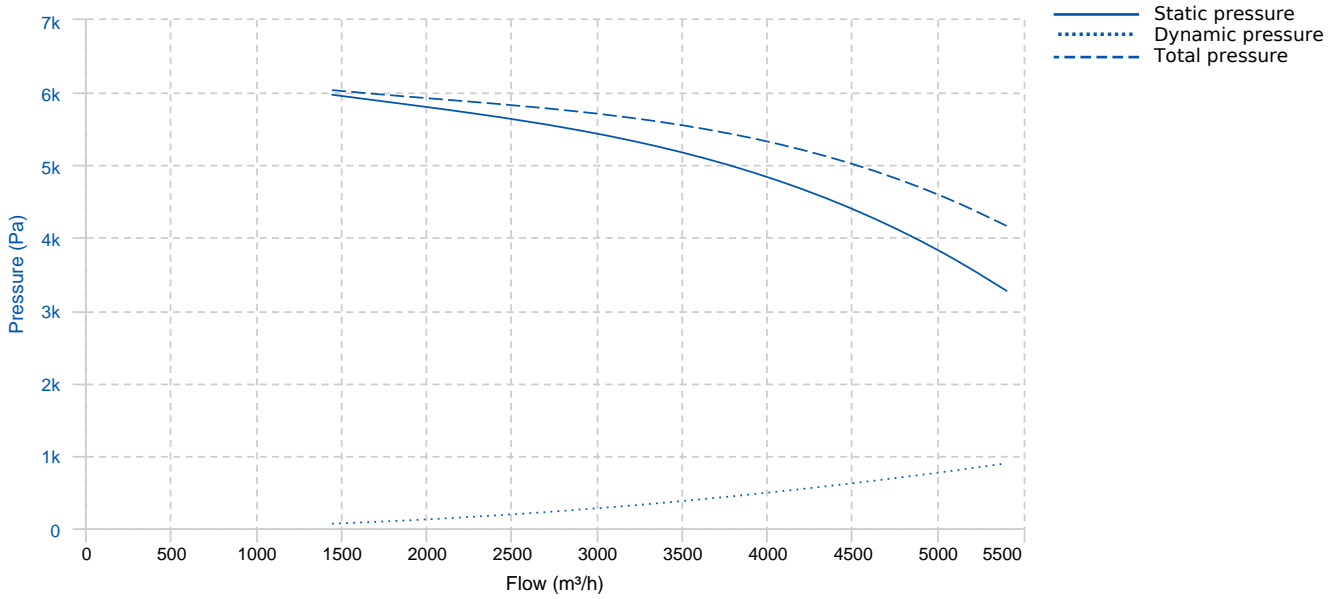
Designed for inline installation, they are suitable for:

- Industrial applications, extraction or injection of air.
- Cooling of machines and parts.
- Clean and slightly dusty air transport.
- Exhaust after filters, separators and cyclones.
- Pneumatic transport.
- Maximum working temperature: carried air: 130°C, ambient: 60°C.

##### UNDER REQUEST

- Fans for 60Hz and special voltages.
- 2 speed motor.
- C4 coating painting
- Hot dip galvanized
- Special steel (Cor-Ten A, Hardox...)
- Inox 304 (normal or electropolished finish)
- Inox 316 (normal or electropolished finish)
- Cooling wheel
- Anticaloric paint
- Reinforced housing
- Fully welded housing (waterproof)
- Insulated housing
- Split casing (for big sizes)
- Inspection door to facilitate maintenance and cleaning
- Drain plug.
- Airtight axle
- Frontal foot
- Double suction flange
- Available in non-sparking air passage and standard motor.
- Other brands of motors.

## PERFORMANCE CURVE

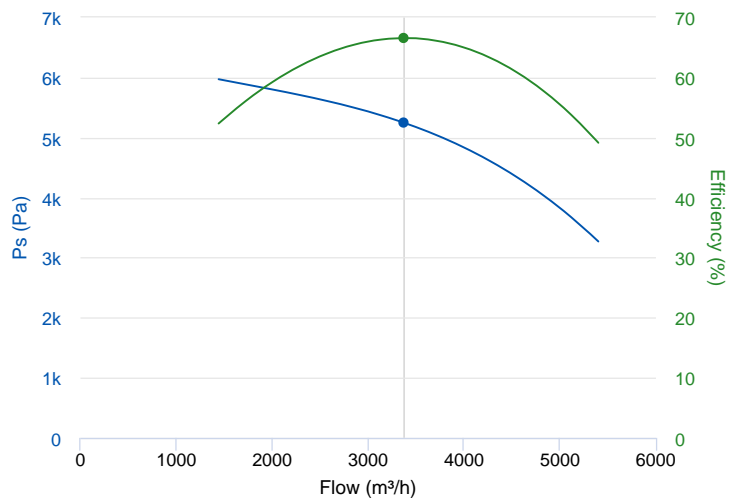


## TECHNICAL DATA

Fan							
RPM	2940	Approx. weight	163 kg	Max. Flow	5410 m³/h		
Motor							
Power	11 kW	RPM	2940	I max. (400V)	20,8 A	I max. (690V)	12,1 A
Size	160L	Approx. weight	85 kg	Efficiency (%)	91.2 %	FP	0.85

## ERP DATA

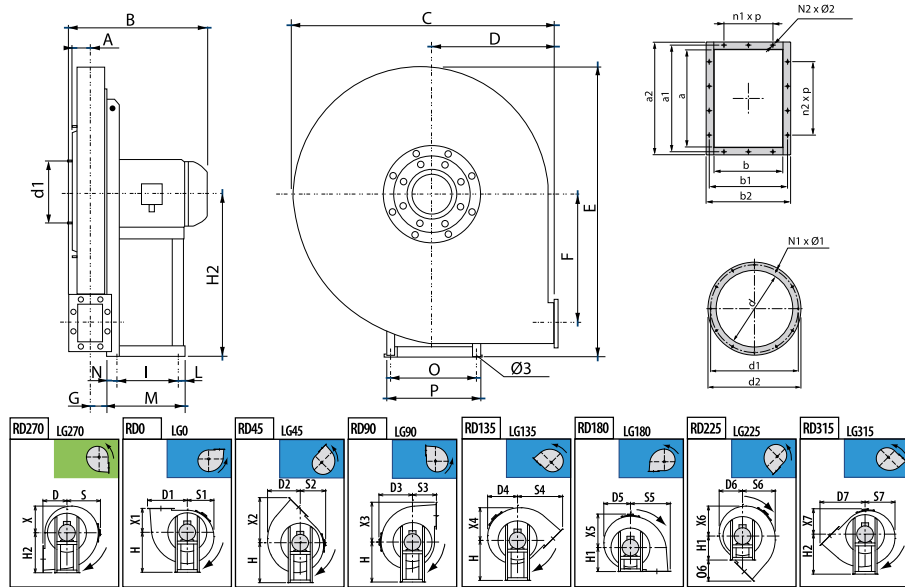
Fan data sheet		
Fan type	Centrifugal fan backward blades with casing	
Installation category	A: Outlet and Inlet free discharge	
Efficiency category	Static	
The fan has to be installed with VF	No	
Motor power (kW)	11	
	Fan values	ERP Requirements 2015
Max. efficiency (%)	66.56	59.64
Efficiency grade (N)	67.92	61
Pabs (kW)	7.421	
Flow (m³/h)	3380.48	
Static pressure (Pa)	5243.69	
Speed (m/s)	2940	



Fan values	ERP Requirements 2015
------------	-----------------------

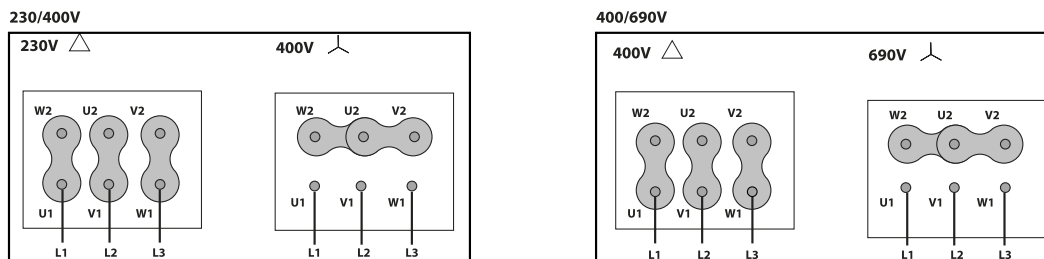
Specific ratio	1.00
----------------	------

## DIMENSIONS



Dimensions (mm)									
A	95	B	684	C	835	D	375	D1	488
D2	438	D3	460	D4	418	D5	393	D6	392
D7	613	E	893	F	337	G	88	H	500
H1	375	H2	500	I	337	L	49	M	436
N	50	N1xØ1	Nº8 M8x25	N2xØ2	8x12	O	395	O6	238
P	440	S	460	S1	393	S2	392	S3	375
S4	613	S5	488	S6	438	S7	418	X	393
X1	375	X2	613	X3	488	X4	438	X5	460
X6	418	X7	392	a	231	a1	265	a2	301
b	166	b1	200	b2	236	d	285	d1	332
d2	365	n1xp	1x112	n2xp	1x112	Ø3	14		

## WIRING DIAGRAM



## ACCESSORIES



**SAFETY SWITCH**  
INT 25 3P A  
REF: INT253PA



**ANTI-VIBRATION JOINT**  
JE 45  
REF: 300719201



**OUTLET PROTECTION GUARD FOR FANS**  
RI 231x166  
REF: A-510102300



**CONNECTION FLANGE**  
AC 300  
REF: 960003209



**FREQUENCY SPEED CONTROLLER**  
SFC 400 III 23A \*  
REF: SFC400III23



**ANTI-VIBRATION SPRING BLOCK**  
AVS (GENERIC)



**CIRCULAR-CIRCULAR ANTI-VIBRATION FLANGE FOR STORM**  
BADS 285-8  
REF: BADS285-8



**ANTI-VIBRATING FLANGE 400<sup>ø</sup>/2H**  
BA-400 30/31  
REF: 960002052



**INLET PROTECTION GUARD FOR CENTRIFUGAL FANS**  
RA 285x8  
REF: A-510002800



**CIRCULAR OUTLET CONNECTION FLANGE**  
EI 231x166-300  
REF: 510202303



**FRONTAL FEET SUPORT**  
FS 560  
REF: \*GH-FS560



**ANTI-VIBRATION RUBBER BLOCK**  
AVR (GENERIC)

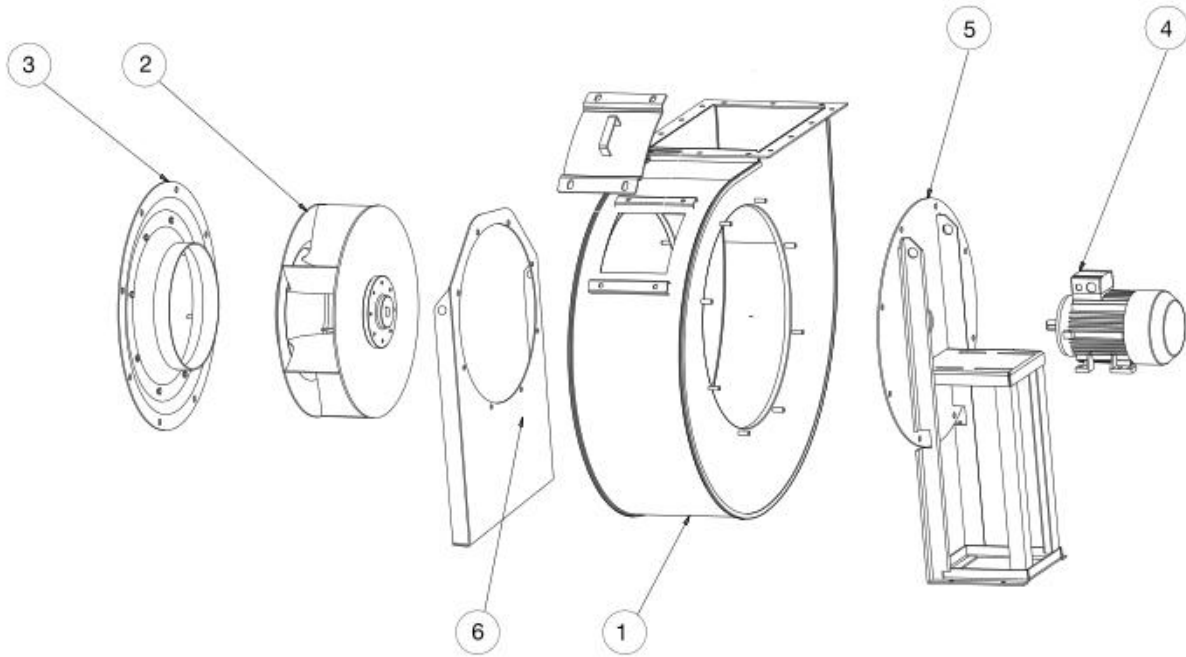


**ACOUSTIC CABINS FOR CENTRIFUGAL FANS**  
AB (GENERIC)



**RECTANGULAR-RECTANGULAR ANTI-VIBRATION FLANGE FOR STORM**  
BIDS 166x231-200  
REF: BIDS-16231

**SPARE PARTS**



	Code	Model	Qty
2	T02805621	TURBINE AAVM/N 560 T2 11kW LG	x1
3	505105600SP04	INLET CONE AAVM-AATVM 560	x1
4	721001086	MOTOR 11KW T2 B3 400/690V	x1