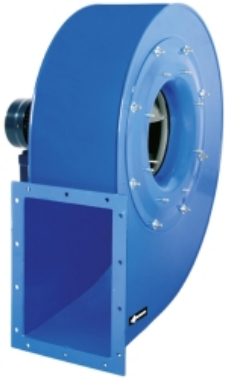


AAVM/N 630 T2 18,5kW (std) (502806326)

GENERAL DATA



HIGH PRESSURE WITH BACKWARD IMPELLER

MANUFACTURING FEATURES:

- Fan made of Fe360 sheet. The fan paint finish is based on a Qualicoat polyester powder coating stoved at 200°C, with an average film thickness of 70 microns. Average heat resistance of coating is 180°C with peaks of 200°C.
- Fully welded housing.
- High efficiency simple inlet backward impeller with self-cleaning system made of Fe360 sheet statically and dynamically balanced. Impellers are painted with polyester primer that resists temperatures up to 300°C.
- Standard asynchronous squirrel-cage motor with IP-55 protection and class F insulation. Manufactured with standard voltages: 230/400V 50Hz in three phase motors up to 4kW and 400/690V 50Hz for higher powers. IE4 motors for 75kW power or higher.
- It allows adjusting the orientation locally from models 350 to 630. Models sizes from 710 to 1000 size the orientation is fixed.
- Available positions (to be indicated in case of order): LG270, LG0, LG45, LG90, LG135, LG180, LG225, LG315, RD0, RD45, RD90, RD135, RD180, RD225, RD270, RD315.
- The indicated codes correspond to the model in position LG270

APPLICATIONS:

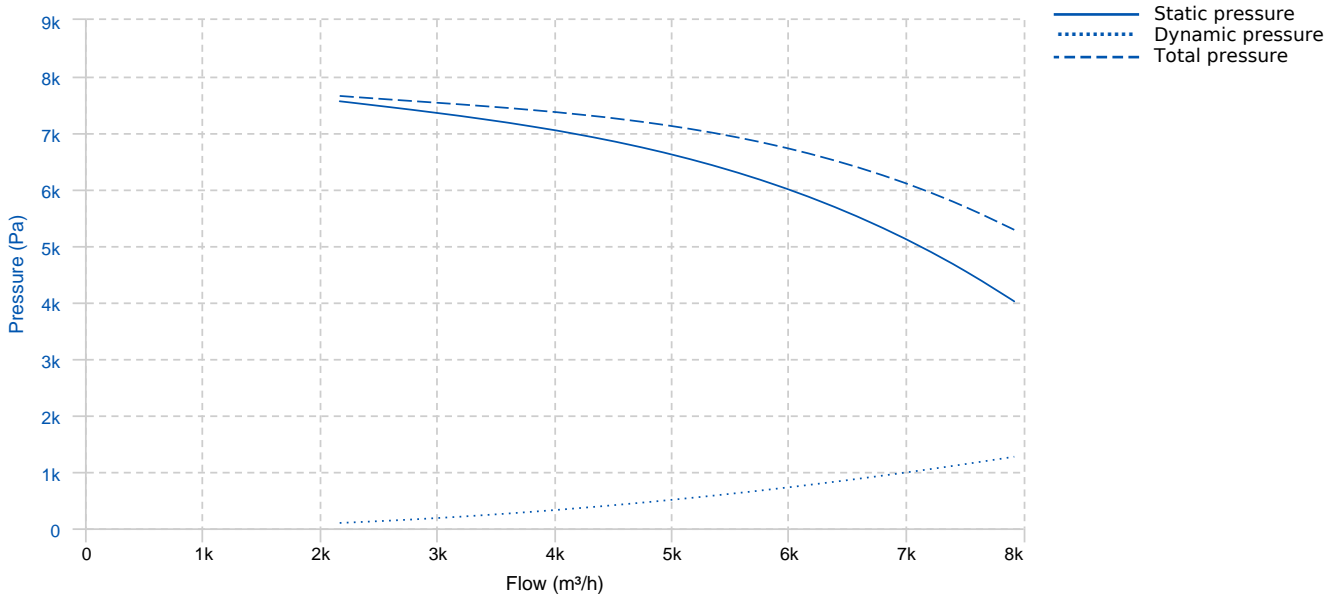
Designed for inline installation, they are suitable for:

- Industrial applications, extraction or injection of air.
- Cooling of machines and parts.
- Clean and slightly dusty air transport.
- Exhaust after filters, separators and cyclones.
- Pneumatic transport.
- Maximum working temperature: carried air: 130°C, ambient: 60°C.

UNDER REQUEST

- Fans for 60Hz and special voltages.
- 2 speed motor.
- C4 coating painting
- Hot dip galvanized
- Special steel (Cor-Ten A, Hardox...)
- Inox 304 (normal or electropolished finish)
- Inox 316 (normal or electropolished finish)
- Cooling wheel
- Anticaloric paint
- Reinforced housing
- Fully welded housing (waterproof)
- Insulated housing
- Split casing (for big sizes)
- Inspection door to facilitate maintenance and cleaning
- Drain plug.
- Airtight axle
- Frontal foot
- Double suction flange
- Available in non-sparking air passage and standard motor.
- Other brands of motors.

PERFORMANCE CURVE

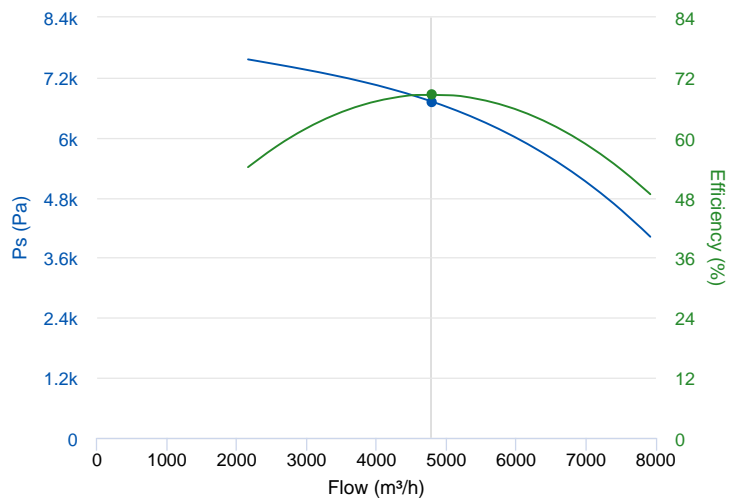


TECHNICAL DATA

Fan							
RPM	2940	Approx. weight	193 kg	Max. Flow	7930 m³/h		
Motor							
Power	18,5 kW	RPM	2940	I max. (400V)	34,4 A	I max. (690V)	19,9 A
Size	160L	Approx. weight	120 kg	Efficiency (%)	92.4 %	FP	0.85

ERP DATA

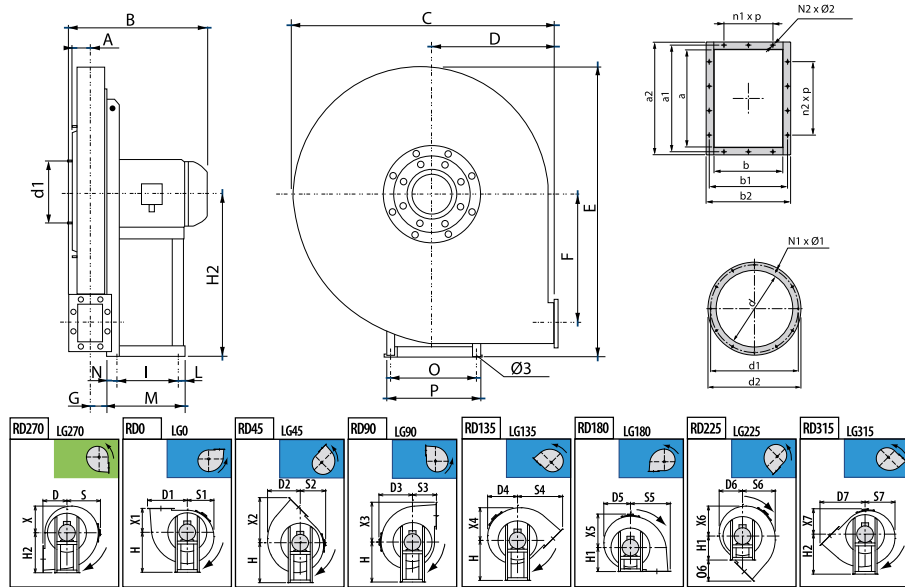
Fan data sheet		
Fan type	Centrifugal fan backward blades with casing	
Installation category	A: Outlet and Inlet free discharge	
Efficiency category	Static	
The fan has to be installed with VF	No	
Motor power (kW)	18.5	
	Fan values	ERP Requirements 2015
Max. efficiency (%)	68.57	61.23
Efficiency grade (N)	68.34	61
Pabs (kW)	13.101	
Flow (m³/h)	4797.7	
Static pressure (Pa)	6719.04	
Speed (m/s)	2940	



Fan values	ERP Requirements 2015
------------	-----------------------

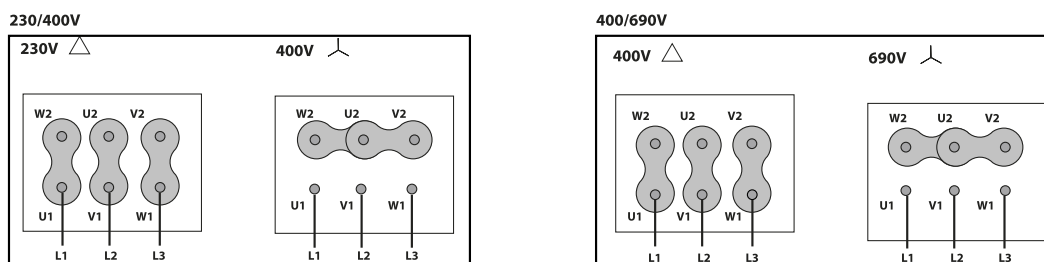
Specific ratio	1.00
----------------	------

DIMENSIONS



Dimensions (mm)									
A	105	B	703	C	940	D	425	D1	545
D2	493	D3	515	D4	472	D5	440	D6	438
D7	688	E	1000	F	381	G	98	H	560
H1	425	H2	560	I	337	L	49	M	436
N	50	N1xØ1	Nº8 M8x25	N2xØ2	10x12	O	395	O6	263
P	440	S	515	S1	440	S2	438	S3	425
S4	688	S5	545	S6	493	S7	472	X	440
X1	425	X2	688	X3	545	X4	493	X5	515
X6	472	X7	438	a	258	a1	292	a2	328
b	185	b1	219	b2	255	d	320	d1	366
d2	400	n1xp	1x112	n2xp	2x112	Ø3	14		

WIRING DIAGRAM



ACCESSORIES



ANTI-VIBRATING FLANGE 400^o/2H
BA-400 30/31
 REF: 960002052



ANTI-VIBRATION JOINT
JE 45
 REF: 300719201



INLET PROTECTION GUARD FOR CENTRIFUGAL FANS
RA 320x8
 REF: A-510003200



OUTLET PROTECTION GUARD FOR FANS
RI 258x185
 REF: A-510102500



CIRCULAR OUTLET CONNECTION FLANGE
EI 258x185-300
 REF: 510202502



CONNECTION FLANGE
AC 300
 REF: 960003209



FRONTAL FEET SUPORT
FS 630
 REF: *GH-FS630



SAFETY SWITCH
INT 40 3P A
 REF: INT403PA



ANTI-VIBRATION RUBBER BLOCK
AVR (GENERIC)



ANTI-VIBRATION SPRING BLOCK
AVS (GENERIC)



ACOUSTIC CABINS FOR CENTRIFUGAL FANS
AB (GENERIC)



FREQUENCY SPEED CONTROLLER
SFC 400 III 41A **
 REF: SFC400III41

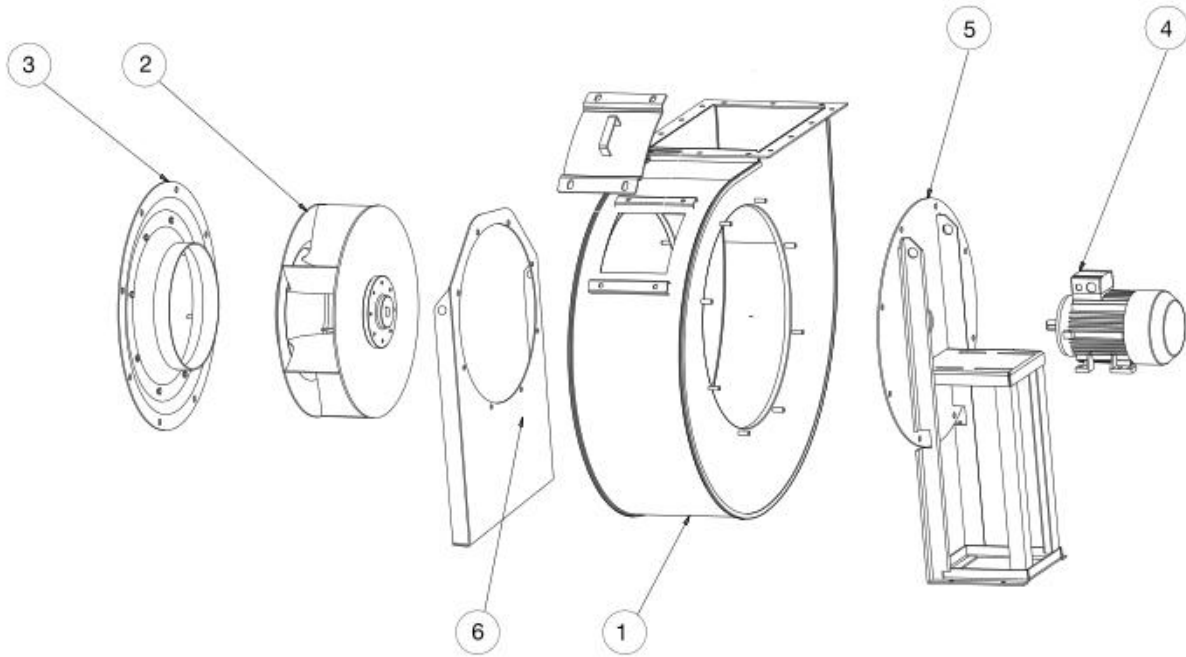


CIRCULAR-CIRCULAR ANTI-VIBRATION FLANGE FOR STORM
BADS 320-8
 REF: BADS320-8



RECTANGULAR-RECTANGULAR ANTI-VIBRATION FLANGE FOR STORM
BIDS 185x258-200
 REF: BIDS-18258

SPARE PARTS



	Code	Model	Qty
2	T02806326	TURBINE AAVM/N 630 T2 18,5kW LG	x1
3	505106300SP04	INLET CONE AAVM-AATVM 630	x1
4	721001093	MOTOR 18,5KW T2 B3 400/690V	x1