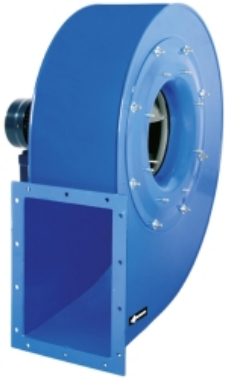


## AAVM/N 711 T2 30kW (std) (502807130)

### GENERAL DATA



#### HIGH PRESSURE WITH BACKWARD IMPELLER

##### MANUFACTURING FEATURES:

- Fan made of Fe360 sheet. The fan paint finish is based on a Qualicoat polyester powder coating stoved at 200°C, with an average film thickness of 70 microns. Average heat resistance of coating is 180°C with peaks of 200°C.
- Fully welded housing.
- High efficiency simple inlet backward impeller with self-cleaning system made of Fe360 sheet statically and dynamically balanced. Impellers are painted with polyester primer that resists temperatures up to 300°C.
- Standard asynchronous squirrel-cage motor with IP-55 protection and class F insulation. Manufactured with standard voltages: 230/400V 50Hz in three phase motors up to 4kW and 400/690V 50Hz for higher powers. IE4 motors for 75kW power or higher.
- It allows adjusting the orientation locally from models 350 to 630. Models sizes from 710 to 1000 size the orientation is fixed.
- Available positions (to be indicated in case of order): LG270, LG0, LG45, LG90, LG135, LG180, LG225, LG315, RD0, RD45, RD90, RD135, RD180, RD225, RD270, RD315.
- The indicated codes correspond to the model in position LG270

##### APPLICATIONS:

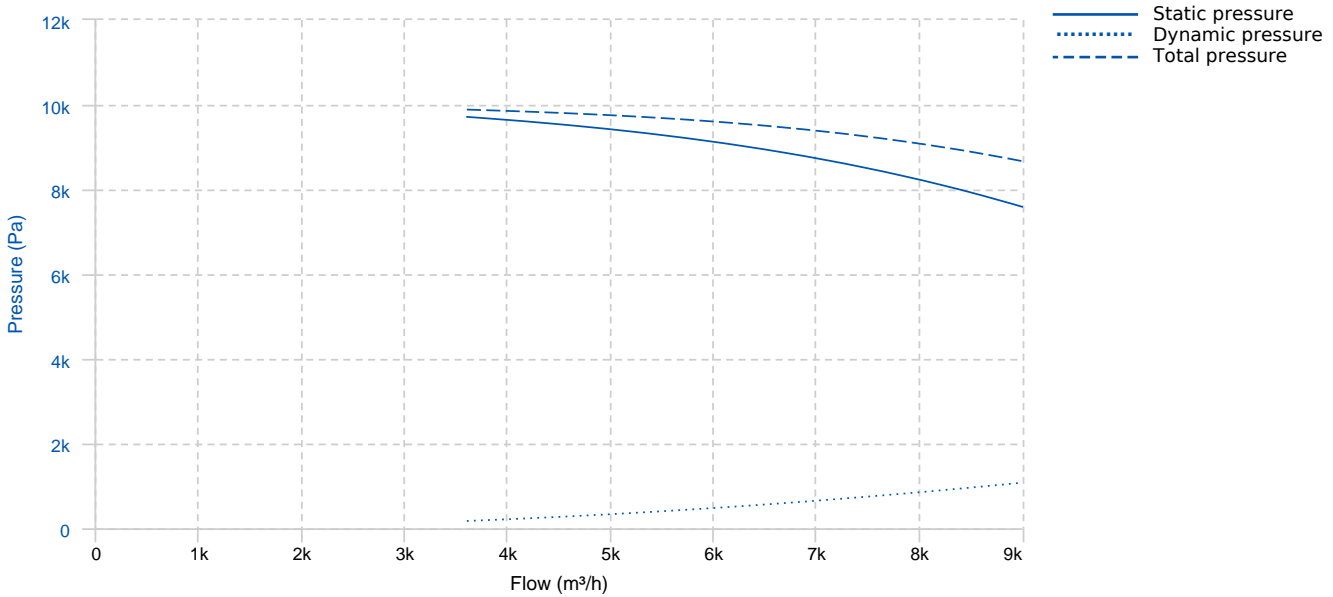
Designed for inline installation, they are suitable for:

- Industrial applications, extraction or injection of air.
- Cooling of machines and parts.
- Clean and slightly dusty air transport.
- Exhaust after filters, separators and cyclones.
- Pneumatic transport.
- Maximum working temperature: carried air: 130°C, ambient: 60°C.

##### UNDER REQUEST

- Fans for 60Hz and special voltages.
- 2 speed motor.
- C4 coating painting
- Hot dip galvanized
- Special steel (Cor-Ten A, Hardox...)
- Inox 304 (normal or electropolished finish)
- Inox 316 (normal or electropolished finish)
- Cooling wheel
- Anticaloric paint
- Reinforced housing
- Fully welded housing (waterproof)
- Insulated housing
- Split casing (for big sizes)
- Inspection door to facilitate maintenance and cleaning
- Drain plug.
- Airtight axle
- Frontal foot
- Double suction flange
- Available in non-sparking air passage and standard motor.
- Other brands of motors.

## PERFORMANCE CURVE

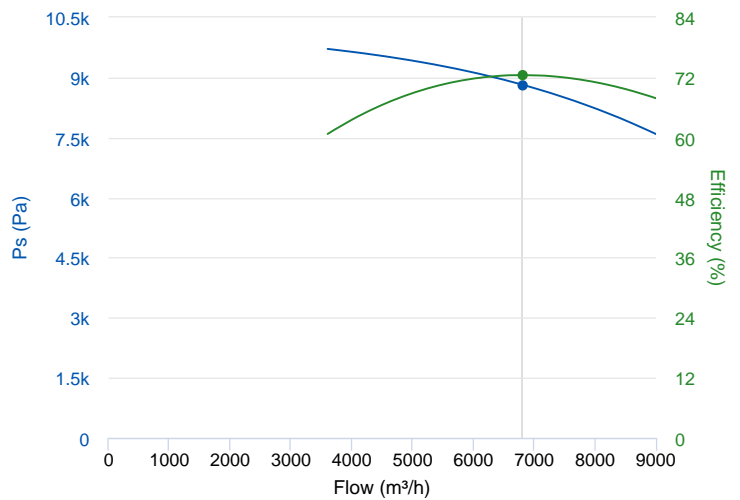


## TECHNICAL DATA

Fan							
RPM	2955	Approx. weight	390 kg	Max. Flow	9010 m³/h		
Motor							
Power	30 kW	RPM	2955	I max. (400V)	56,6 A	I max. (690V)	32,8 A
Size	200L	Approx. weight	190 kg	Efficiency (%)	93.3 %	FP	0.83

## ERP DATA

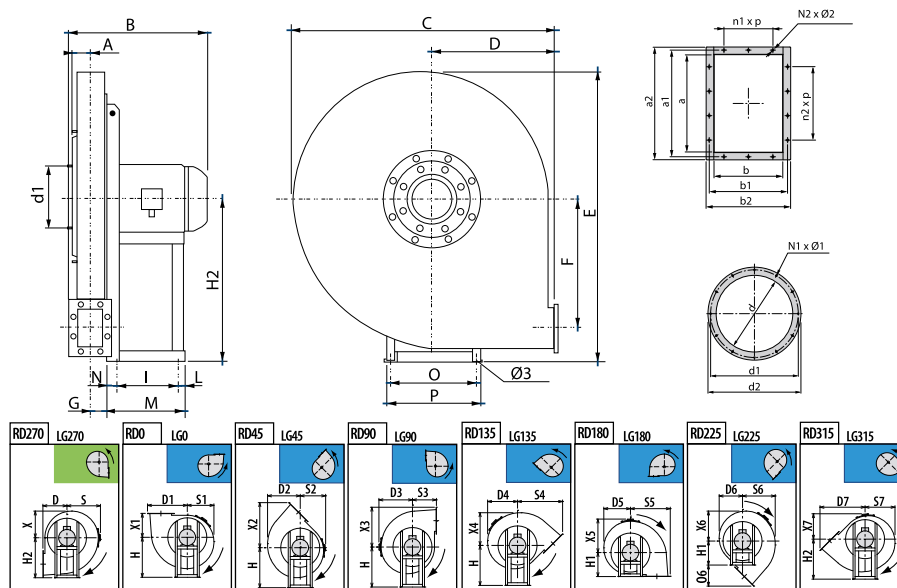
Fan data sheet		
Fan type	Centrifugal fan backward blades with casing	
Installation category	A: Outlet and Inlet free discharge	
Efficiency category	Static	
The fan has to be installed with VF	No	
Motor power (kW)	30	
	Fan values	ERP Requirements 2015
Max. efficiency (%)	72.48	61.85
Efficiency grade (N)	71.63	61
Pabs (kW)	23.032	
Flow (m³/h)	6811.42	
Static pressure (Pa)	8819.18	
Speed (m/s)	2955	



Fan values	ERP Requirements 2015
------------	-----------------------

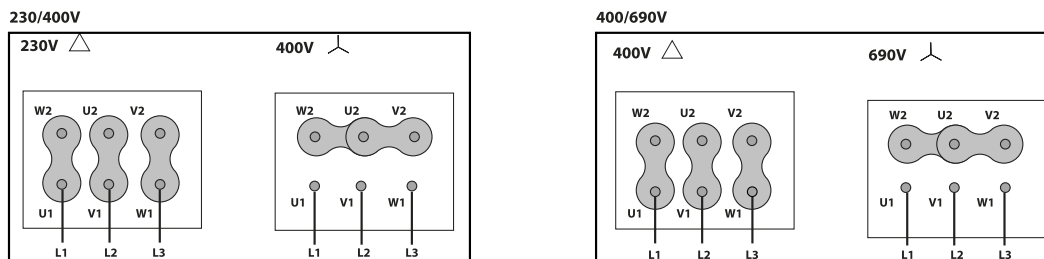
Specific ratio	1.00
----------------	------

## DIMENSIONS



Dimensions (mm)									
A	115	B	917	C	1045	D	475	D1	610
D2	547	D3	570	D4	522	D5	493	D6	489
D7	767	E	1123	F	426	G	108	H	630
H1	475	H2	630	I	381	L	39	M	500
N	80	N1xØ1	Nº8 M8x25	N2xØ2	10x12	O	506	O6	292
P	568	S	570	S1	493	S2	489	S3	475
S4	767	S5	610	S6	547	S7	522	X	493
X1	475	X2	767	X3	610	X4	547	X5	570
X6	522	X7	489	a	288	a1	332	a2	368
b	205	b1	249	b2	285	d	360	d1	405
d2	440	n1xp	1x125	n2xp	2x125	Ø3	19		

## WIRING DIAGRAM



## ACCESSORIES



**CONNECTION FLANGE  
AC 350**  
REF: 960003211



**ANTI-VIBRATION JOINT  
JE 45**  
REF: 300719201



**OUTLET PROTECTION GUARD FOR FANS  
RI 288x205**  
REF: A-510102800



**SAFETY SWITCH  
INT 63 3P A**  
REF: INT633PA



**ANTI-VIBRATION SPRING BLOCK  
AVS (GENERIC)**



**FREQUENCY SPEED CONTROLLER  
SFC 400 III 60A \*\***  
REF: SFC400III60



**RECTANGULAR-RECTANGULAR ANTI-VIBRATION  
FLANGE FOR STORM  
BIDS 205x288-200**  
REF: BIDS-20288



**ANTI-VIBRATING FLANGE 400º/2H  
BA-400 35**  
REF: 960002053



**INLET PROTECTION GUARD FOR CENTRIFUGAL  
FANS  
RA 360x8**  
REF: A-510003600



**CIRCULAR OUTLET CONNECTION FLANGE  
EI 288x205-350**  
REF: 510202803



**ANTI-VIBRATION RUBBER BLOCK  
AVR (GENERIC)**

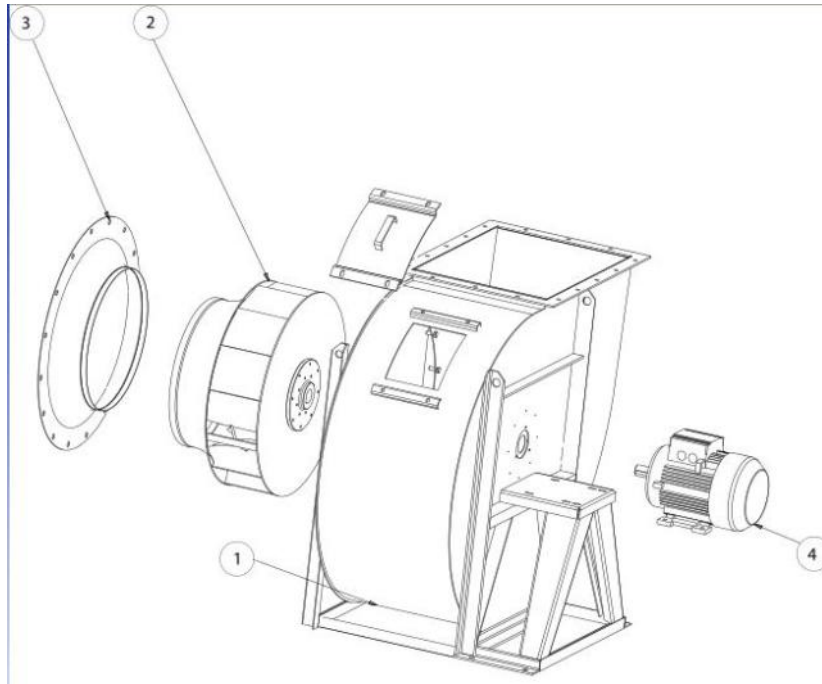


**ACOUSTIC CABINS FOR CENTRIFUGAL FANS  
AB (GENERIC)**



**CIRCULAR-CIRCULAR ANTI-VIBRATION FLANGE  
FOR STORM  
BADS 360-8**  
REF: BADS360-8

**SPARE PARTS**



	Code	Model	Qty
2	T02807130	TURBINE AAVM/N 711 T2 30kW LG	x1
3	505107100SP04	INLET CONE AAVM-AATVM 710	x1
4	721001095	MOTOR 30KW T2 B3 400/690V	x1