

BD 15/15 T6 2,2kW (252370106)

GENERAL DATA



FAN DOUBLE INLET

MANUFACTURING FEATURES:

- Galvanised steel sheet housing.
- Polyamide impeller reinforced with fibreglass in models 7/7, 9/9, 10/10 and 12/12. The impeller of the rest of models are made of galvanised steel sheet.
- Double inlet forward curved impeller in all models.
- Supplied with mounting feet (included in price). Except 15/15 which is a cubic model.
- Exclusive system Casals fixing motor and turbine fan by flexible arms silent blocks to avoid any vibration. Arms in compliance with ROHS regulations 2002/95 / EC (Restriction of Hazardous Substances in electrical and electronic equipment)
- Closed motors specially designed Casals: extruded aluminum housing, all protected inside the terminal box on the motor IP 65 protection and motor with IP54 protection and Class F insulation standard voltages: 230V 50Hz in single phase and 230/400V 50Hz three-phase.
- Single phase motors with controllable voltage speed. Three phase motors controllable using a frequency speed controller

APPLICATIONS:

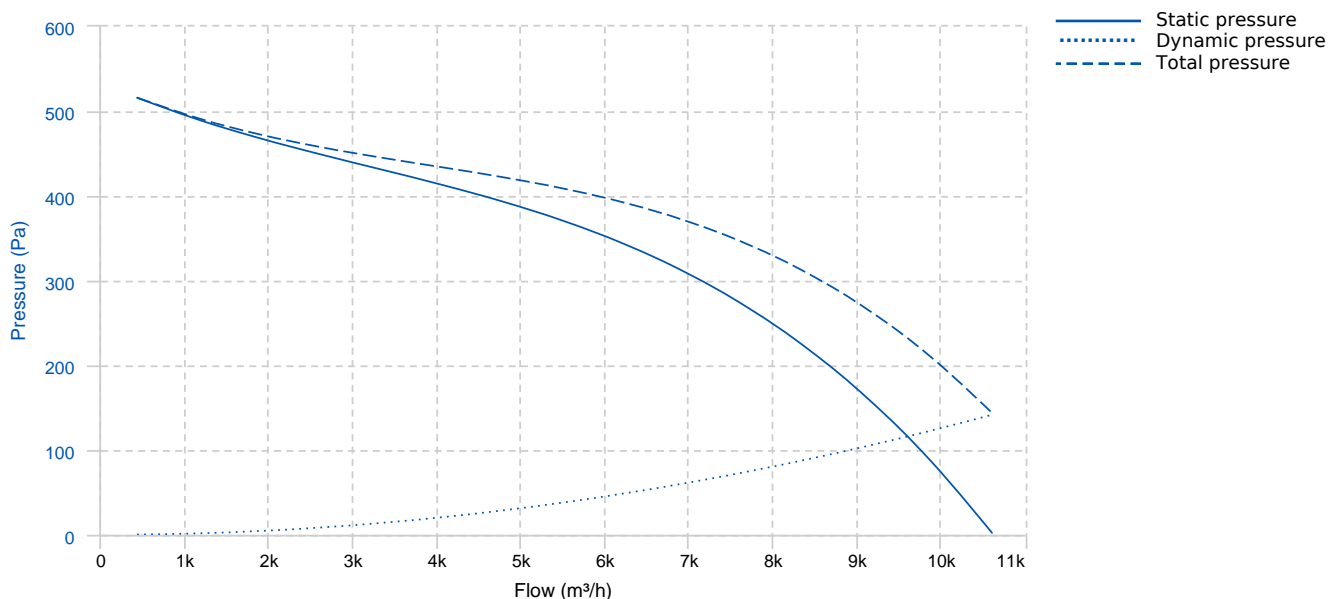
Designed for assembly in equipment:

- Ventilation boxes and air handling units.
- Centrifugal heaters.
- Industrial and professional kitchen hoods. Use in supply or extraction with prior fat filtering.
- Maximum working temperature: 50°C for single phase motors and 60°C for three phase motors.

UNDER REQUEST

- Impeller made of galvanized steel sheet.
- MBI assembled

PERFORMANCE CURVE

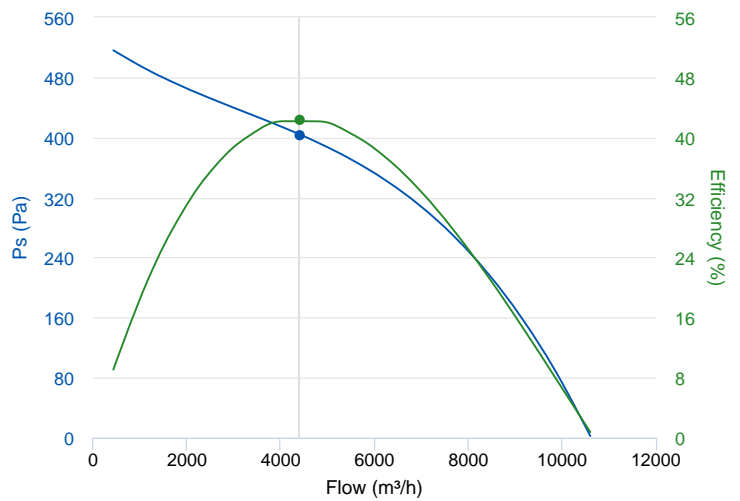


TECHNICAL DATA

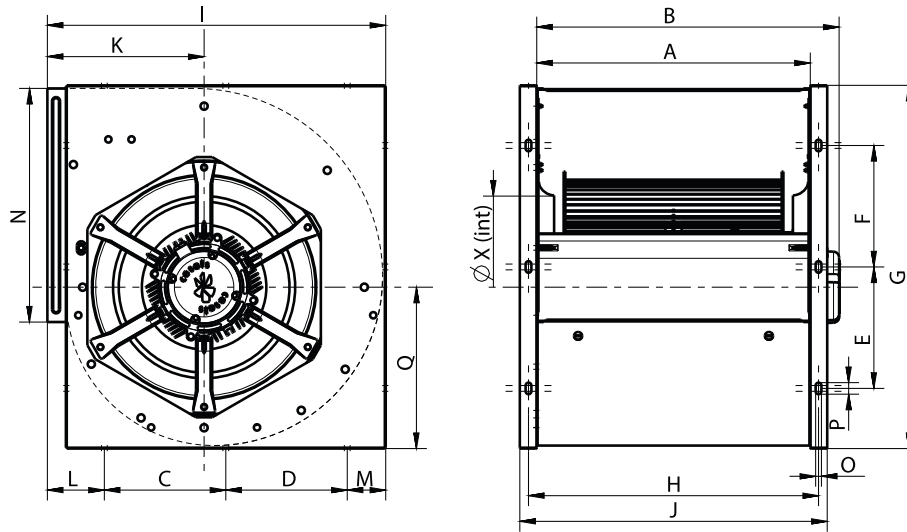
| Fan | | | | | | | |
|-------|--------|----------------|-------|----------------|-------------------------|---------------|--------|
| RPM | 900 | Approx. weight | 57 kg | Max. Flow | 10600 m ³ /h | | |
| Motor | | | | | | | |
| Power | 2,2 kW | RPM | 900 | I max. (230V) | 10,92 A | I max. (400V) | 6,31 A |
| Size | STC100 | Approx. weight | 17 kg | Efficiency (%) | 83.5 % | | |

ERP DATA

| Fan data sheet | | |
|-------------------------------------|--|-----------------------|
| Fan type | Centrifugal fan radial or forward blades | |
| Installation category | A: Outlet and Inlet free discharge | |
| Efficiency category | Static | |
| The fan has to be installed with VF | No | |
| Motor power (kW) | 2.2 | |
| | Fan values | ERP Requirements 2015 |
| Max. efficiency (%) | 42.37 | 38.2 |
| Efficiency grade (N) | 48.18 | 44 |
| Pabs (kW) | 1.212 | |
| Flow (m ³ /h) | 4414.47 | |
| Static pressure (Pa) | 403.8 | |
| Speed (m/s) | 900 | |
| Specific ratio | 1.00 | |



DIMENSIONS

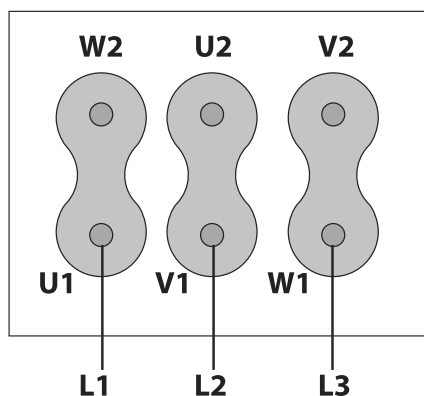


Dimensions (mm)

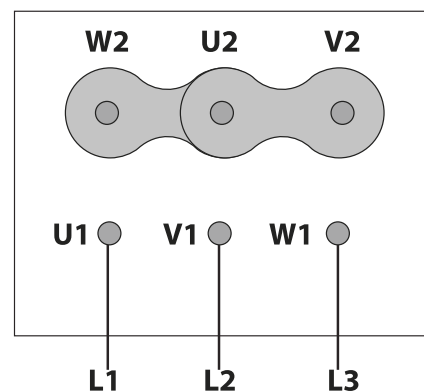
| | | | | | | | | | |
|---|-----|---|-------|---|-------|---|-----|---|-------|
| A | 473 | B | 522,8 | C | 210 | D | 210 | E | 210 |
| F | 210 | G | 628 | H | 501,5 | I | 585 | J | 531,5 |
| K | 271 | L | 98,5 | M | 66,5 | N | 404 | O | 10 |
| P | 20 | Q | 279 | X | 315 | | | | |

WIRING DIAGRAM

230V 



400V 



ACCESSORIES



SAFETY SWITCH
INT 25 3P A
REF: INT253PA



OUTLET PROTECTION GUARD FOR FANS
RI 15/15
REF: 960000409



INLET PROTECTION GUARD FOR CENTRIFUGAL FANS
RA 15
REF: 960690100

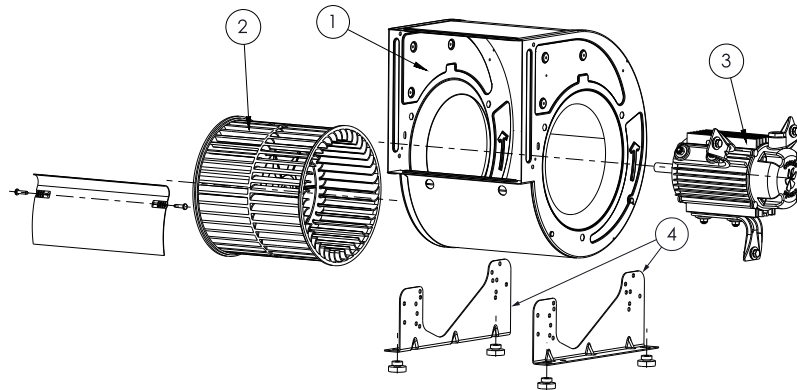


OUTLET FLANGE FOR BD AND BV FANS
MBI 15/15
REF: 252371691



FREQUENCY SPEED CONTROLLER
SFC 400 III 8A *
REF: SFC400III8

SPARE PARTS



| | Code | Model | Qty |
|---|-------------|-----------------------------|-----|
| 2 | R-252379382 | TURBINE BD 15/15 | x1 |
| 3 | 252379476 | MOTOR+SUPPORTS BD39T6-3 M/C | x1 |
| 3 | 721081261 | MOTOR BD T6 2,2kW 230/400V | x1 |