

## BOX BD 9/9 M4 0,35kW (251220550)

### GENERAL DATA

#### CENTRIFUGAL IN SOUNDPROOF CABINET



#### MANUFACTURING FEATURES:

- Impellers made of polyamide reinforced with fiberglass up to size 33/33 (12/12). Rest of models made of galvanized steel sheet.
- BD range fans assembled in soundproof cabinets with thermo-acoustic insulation, Bs1d0 fire class on the supply pannel.
- Fan assembled on antivibration mountings.
- Connection gland included.
- Closed motors specially designed by Casals with extruded aluminum housing, which make the whole connection is protected within the integrated terminal box on the motor IP 65 protection and motor with IP54 protection and Class F insulation standard voltages: 230V 50Hz in single phase and 230/400V 50Hz three-phase.

#### APPLICATIONS:

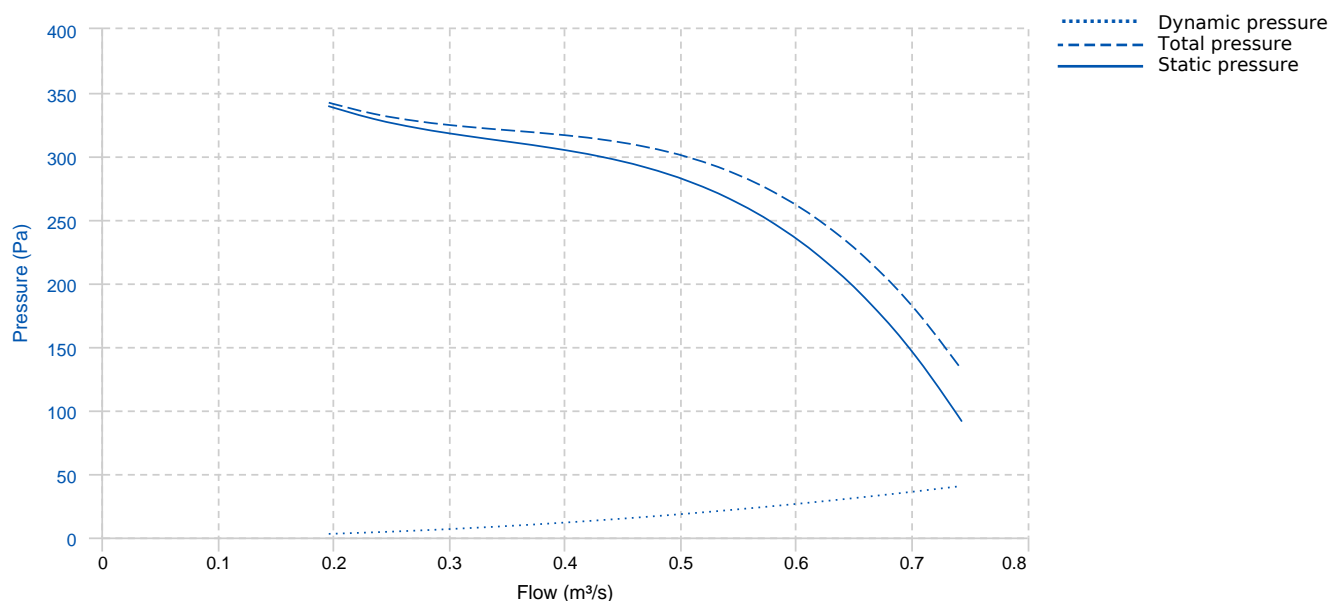
Designed for inline installation, indoor or outdoor assembly, they are suitable for:

- Air renewal in buildings and industries.
- Industrial and professional kitchen hoods. Use in supply or extraction with prior fat filtering.
- Maximum working temperature: 50°C.

#### UNDER REQUEST:

- LG0 position.
- Impellers made of galvanised steel sheet.
- 3 speed fans.

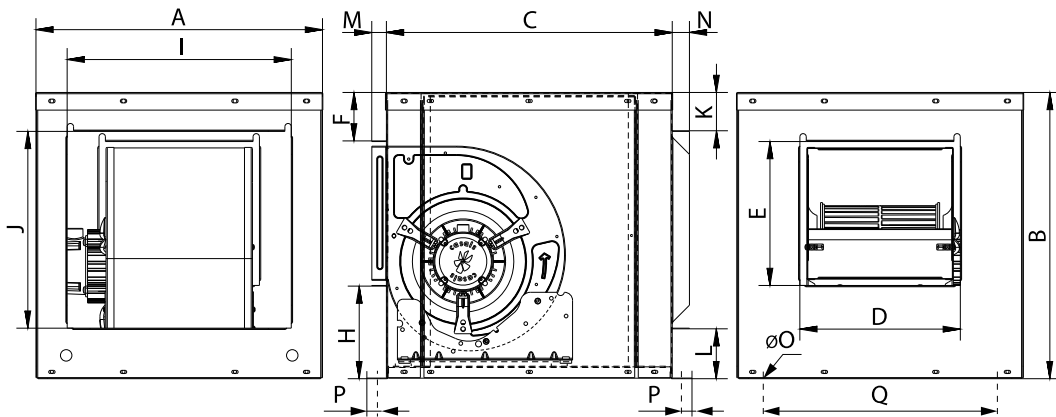
### PERFORMANCE CURVE



## TECHNICAL DATA

Fan							
RPM	1375	Approx. weight	30 kg	Max. Flow	0.74 m <sup>3</sup> /s		
Motor							
Power	0,35 kW	RPM	1375	Capacitor	18μF 400V	I max. (230V)	2,7 A
Size	STC80	Approx. weight	6.4 kg	Efficiency (%)	71.8 %	FP	0.98

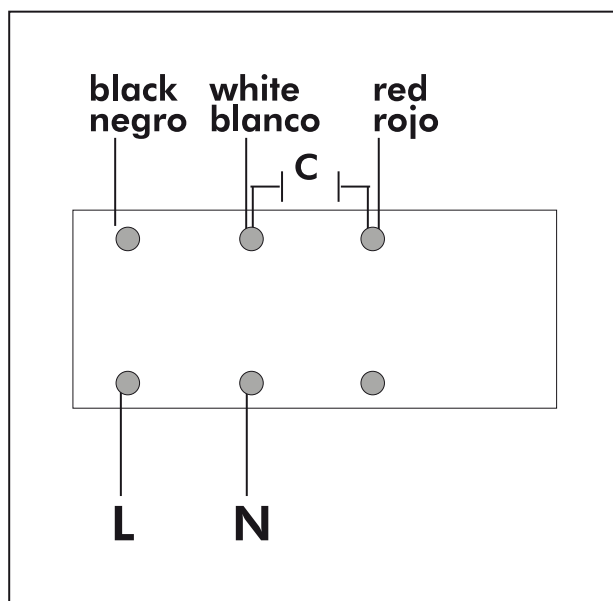
## DIMENSIONS



Dimensions (mm)									
A	535	B	535	C	535	D	311	E	268
F	96	H	169	I	418	J	359	K	78
L	96	M	23	N	27	O	10	P	17
Q	478,5								

## WIRING DIAGRAM

**SINGLE PHASE MOTOR  
MOTOR MONOFÁSICO**



**ACCESSORIES**



**MANUAL SINGLE PHASE SPEED CONTROLLER  
REG 3A  
REF: 960710030**



**SAFETY SWITCH  
INT 25 3P A  
REF: INT253PA**



**METALLIC GRAVITY SHUTTER FOR CABINET  
FANS. CERTIFIED 400°C/2H  
PI 25/25 (9/9)  
REF: 970250100**



**INLET BLIND COVER  
TCA 7  
REF: A-960001112**



**INLET/OUTLET ROUND COVER  
TIAC 2 (OUT)  
REF: 960001352**



**INLET/OUTLET ROUND COVER  
TIAC 13 (IN)  
REF: 960001363**



**OUTDOOR FLANGE WITH BIRD GUARD  
VIS IN 9  
REF: 960000052**



**RECTANGULAR-CIRCULAR  
FLANGE  
BAC 2 (OUT 9/9)  
REF: 960002952**      **ANTI-VIBRATION**

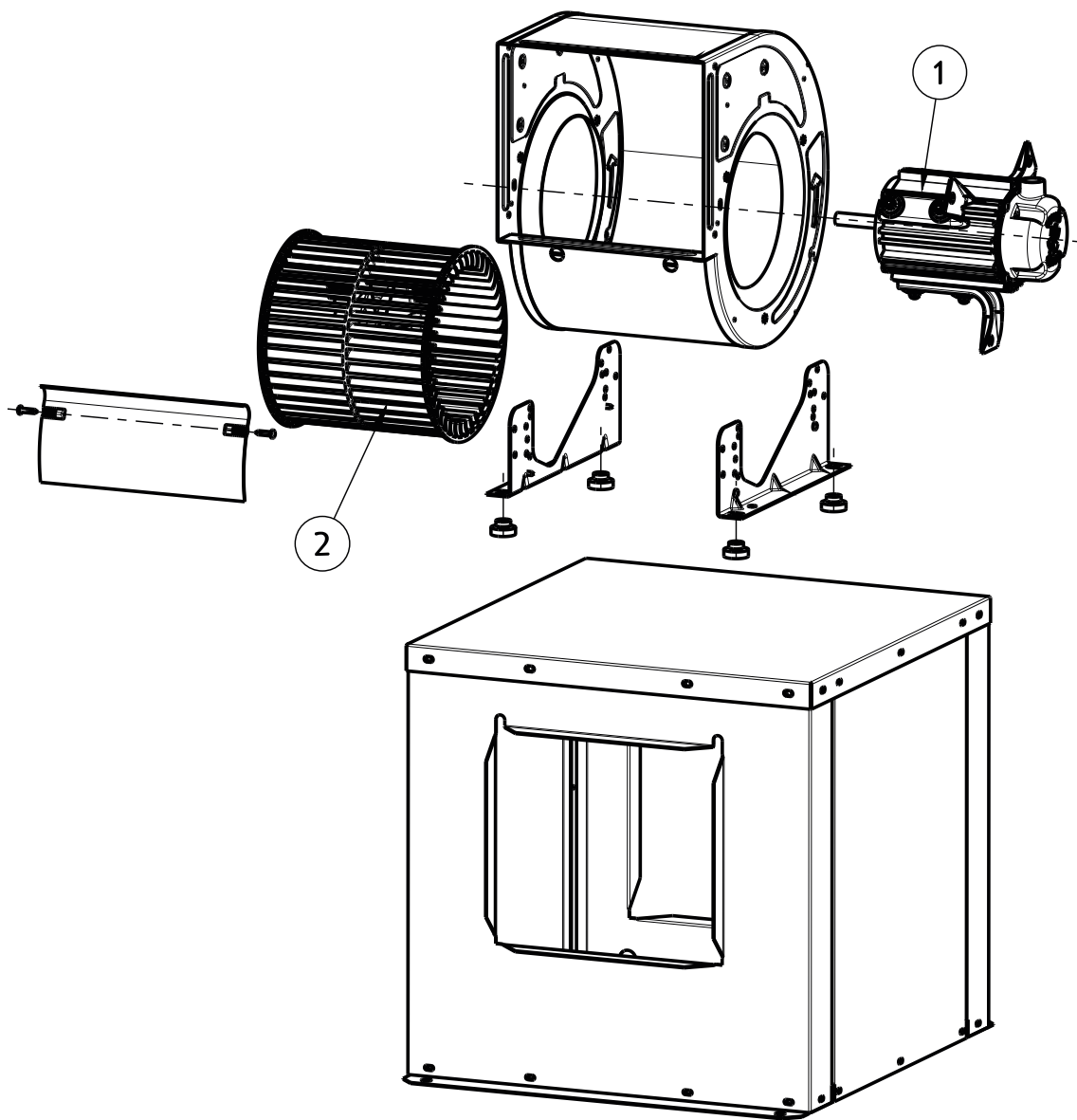


**RECTANGULAR-CIRCULAR  
FLANGE  
BAC 13 (IN BOX BD/BV 9/9)  
REF: 960002963**      **ANTI-VIBRATION**



**OUTDOOR FLANGE WITH BIRD GUARD  
VIS OUT 9  
REF: 960000050**

**SPARE PARTS**



	Code	Model	Qty
1	251229478	MOTOR+SUPPORTS BD9/9M4	x1
1	720331132	MOTOR BD M4 0,35kW 230V	x1
2	R-251289383	TURBINE PA6 BD9/9	x1