

# HC EVO 40 EEC (277409040PECV2)

## GENERAL DATA



SHORT CASE VARIABLE PITCH BLADES WITH EEC MOTOR

### MANUFACTURING FEATURES

- Short case axial fan with reinforced body, with double flange, made of rolling steel sheet.
- Pad mounted motor support system with guide vanes.
- Polyester powder finishing coat.
- Low sound level and high performance.
- PM brushless motor (permanent magnets), synchronous, electronically commutated, high efficiency and low sound level. Specially designed for fans with electronic operation and control in deported box IP65.

Working range: from 400 to 1200-2000rpm (depending on the models)

Motor with IP54 protection and class F insulation. IP 65 drive case

Power: 220V  $\pm$  10% single phase

Power frequency: 50 / 60Hz

Operating temperature range (electrical box): -20°C to 50°C

Speed control through signal 0-10V or PWM

- Polypropylene impeller with variable pitch angle (Stopped and in origin).

### APPLICATIONS

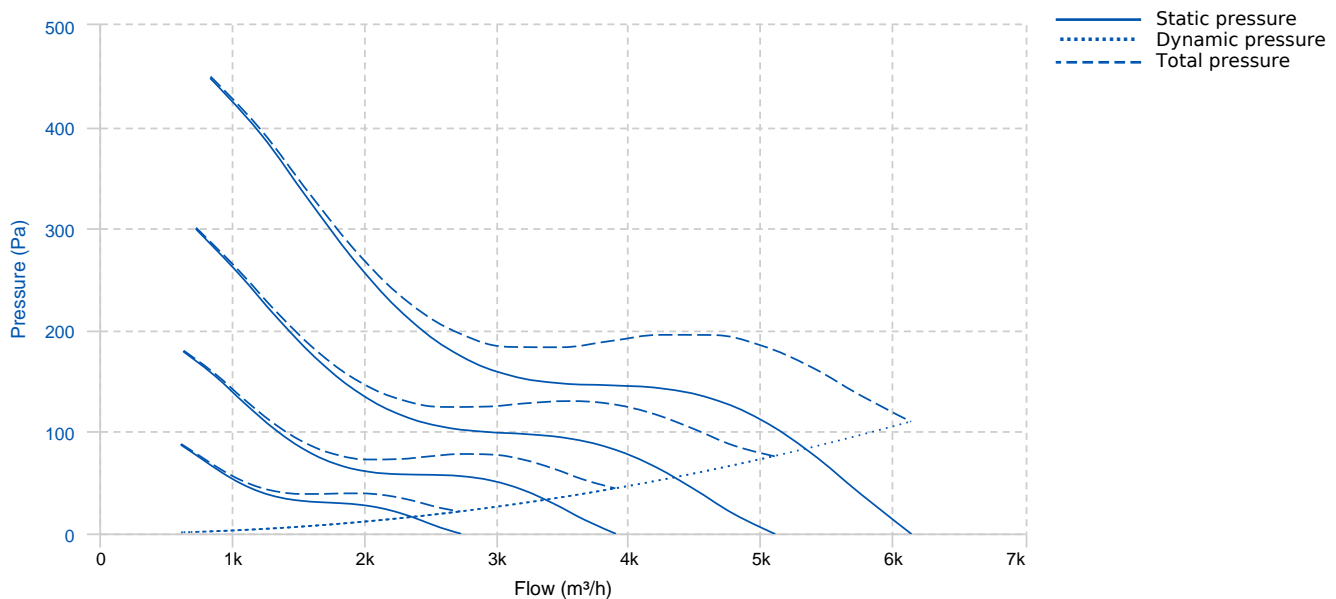
Designed for inline installation, they are suitable for

- Air renewal in buildings and industries.
- Smoke extraction.
- Maximum transported air temperature: 60°C.

### UNDER REQUEST

- Casing in hot galvanized sheet or stainless steel.

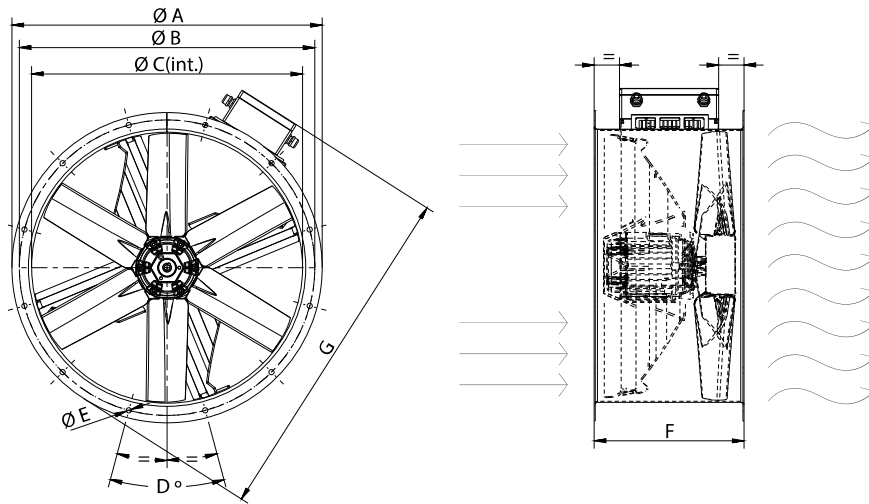
## PERFORMANCE CURVE



## TECHNICAL DATA

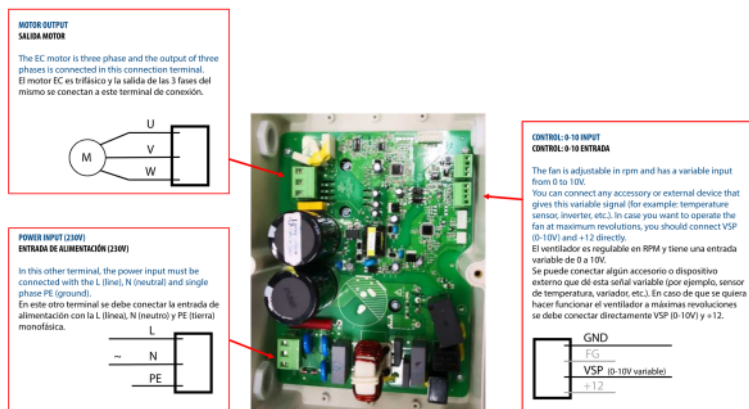
Fan							
Approx. weight	21.5 kg	Max. Flow	6140 m <sup>3</sup> /h				
Motor							
Power	0,75 kW	RPM	2000 (máx)	I max. (230V)	5,8 A	Approx. weight	0 kg

## DIMENSIONS



Dimensions (mm)									
A	472	B	450	C	403	D	8x45	E	10
F	350	G	563						

## WIRING DIAGRAM



## ACCESSORIES



**SAFETY SWITCH**  
**INT 25 3P A**  
**REF: INT253PA**

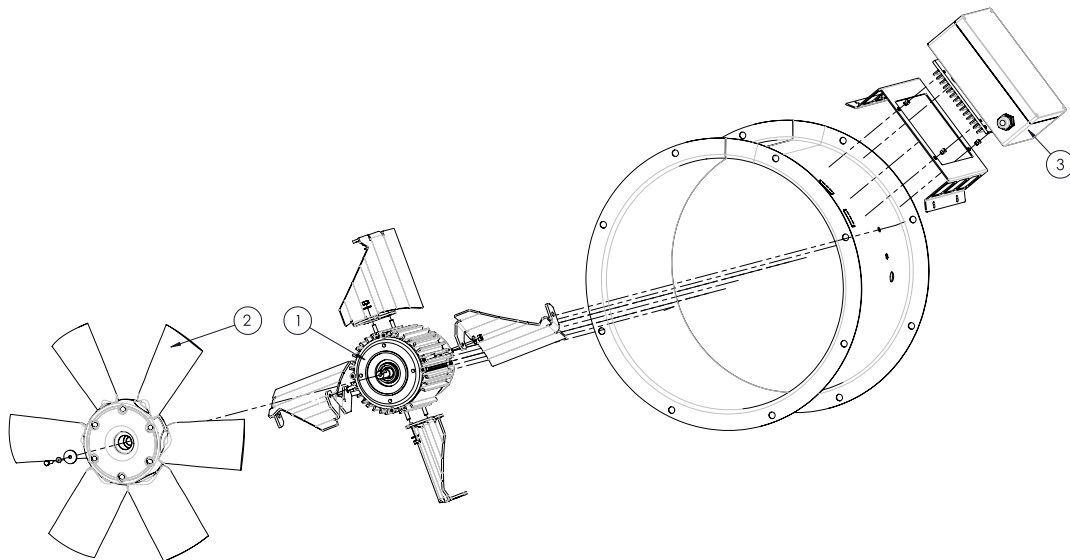


**PROTECTION GUARD FOR LONG CASE AXIAL FANS**  
**RP 40**  
**REF: 960300101**



**SPEED CONTROLLER FOR EEC MOTOR**  
**REGC**  
**REF: FX263300**

## SPARE PARTS



	Code	Model	Qty
1	720331075IEC4V2	MOTOR EEC 750W (T,80)	x1
2	R-H40006240PIMP	IMPELLER 400:AP0:6 G40 D14 IMP	x1
3	301002104R200	ELECTRONICAL DEVICE EEC750 2000RPM	x1