

JFC 315/H T2 UN F400 (274310198M003)

GENERAL DATA



CIRCULAR AXIAL JET FAN 400°C/2h

MANUFACTURING FEATURES:

The JFC F400 models are composed of an axial fan and two silencers.

FAN:

- Axial fan with reinforced tubular casing, made of steel sheet. The connection box is accessible by the side from a removable door.
- Standard asynchronous squirrel-cage motor with IP-55 protection and Class H insulation, CERTIFIED 400°C/2h. Standard voltages 400-460V(Y) 60Hz for 1 speed motors and 400V(D) 60Hz for 2 speed motors.

SILENCERS:

- Casing in galvanized steel. Inner duct made of perforated galvanized steel sheet.
- The silencers are filled with mineral wool with high acoustic absorption properties, preventing most of the fan noise to be propagated.
- Unidirectional JFC F400 UN is equipped with a protection guard at the inlet side and a deflector at the outlet. The deflector directs the air away from the ceiling and obstacles like beams or ducting, sweeping the whole volume of air to the closest extraction point.
- Reversible JFC F400 RE is equipped with a protection guards on both sides.

APPLICATIONS:

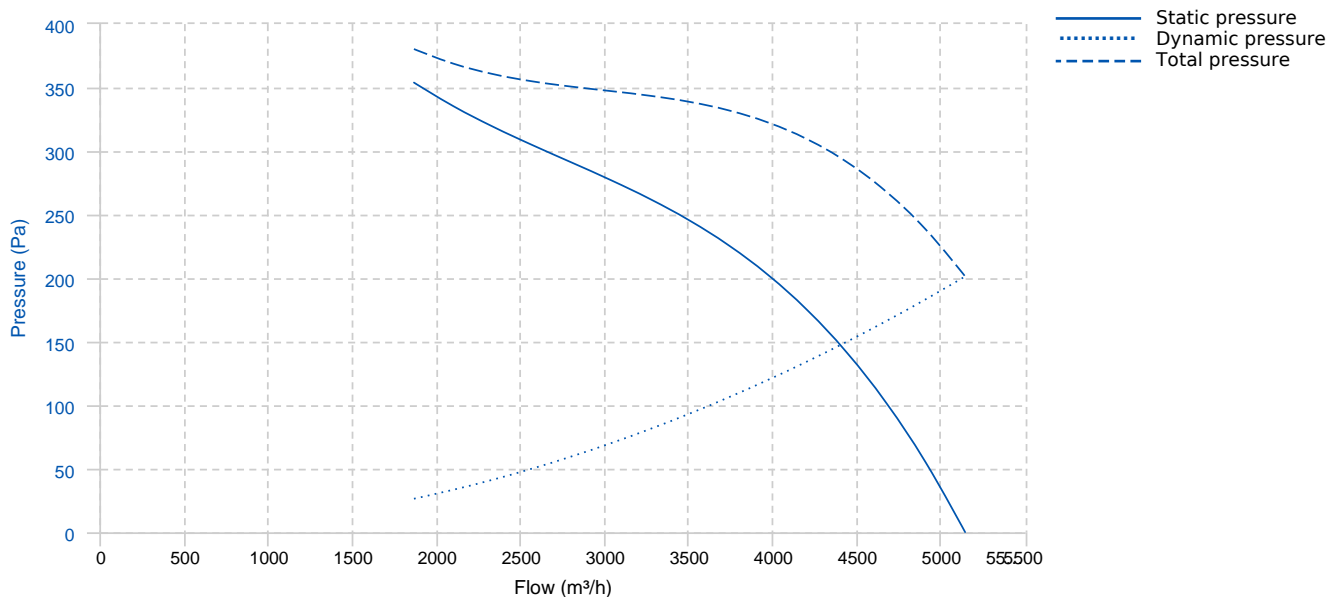
- Conceived for car parkings and large spaces where polluted air, or smoke from an accidental fire, needs to be removed effectively.
- An optimized design minimizes the height needed for their installation and assures a silent operation.
- Maximum working temperature: 60°C.

UNDER REQUEST

Special voltages

Official homologation by the European laboratory APPLUS according to EN 12101-3:2015
Certification Nr: 0370-CPD-1325

PERFORMANCE CURVE



TECHNICAL DATA

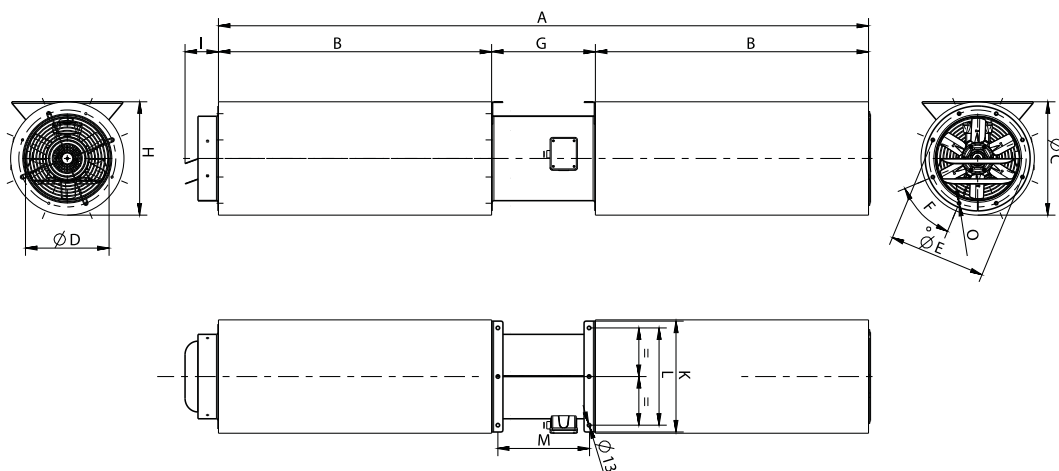
Fan

RPM	3432	Approx. weight	93 kg	Max. Flow	5150 m³/h
-----	------	----------------	-------	-----------	-----------

Motor

Power	1,1 kW	RPM	3432	I max. (400V)	2,39 A	Size	80
Approx. weight	14 kg	Efficiency (%)	80.5 %	FP	0.85		

DIMENSIONS



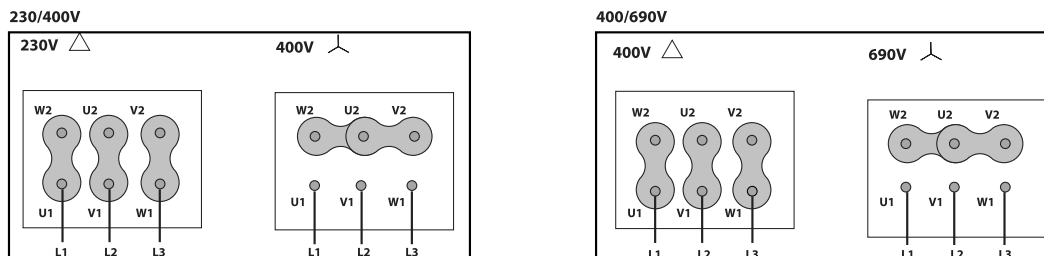
Dimensions (mm)

A	1788,5	B	720	F	8x45°	G	348,5	H	415
I	122	K	406	L	356	M	301	O	M8

Dimensions (mm)

Thrust (N)	33	ØC	415	ØD	306	ØE	355
------------	----	----	-----	----	-----	----	-----

WIRING DIAGRAM



ACCESSORIES



SAFETY SWITCH
INT 25 3P A
REF: INT253PA



SAFETY SWITCH FOR 400°C/2h
INT 400 25A 3P
REF: 508902501



FREQUENCY SPEED CONTROLLER
SFC 230 I 4,2A *
REF: SFC230I004



FREQUENCY SPEED CONTROLLER
SFC 400 III 3,6A *
REF: SFC400III4



CEILING ANTI-VIBRATION SPRING BLOCK
AVT (GENERIC)