

MA 31 T2 2,2kW (253430106)

GENERAL DATA



FORWARD ALLUMINIUM IMPELLER FAN, ALLUMINIUM CAST CASING

MANUFACTURING FEATURES:

- Cast aluminium housing.
- Cast aluminium impeller.
- Polyester powder finishing coat.
- Standard asynchronous squirrel-cage motor with IP-55 protection and Class F insulation. Manufactured with standard voltages: 230V 50Hz in single phase motors and 230/400V 50Hz in three phase motors.
- Standard position LG 270.

APPLICATIONS:

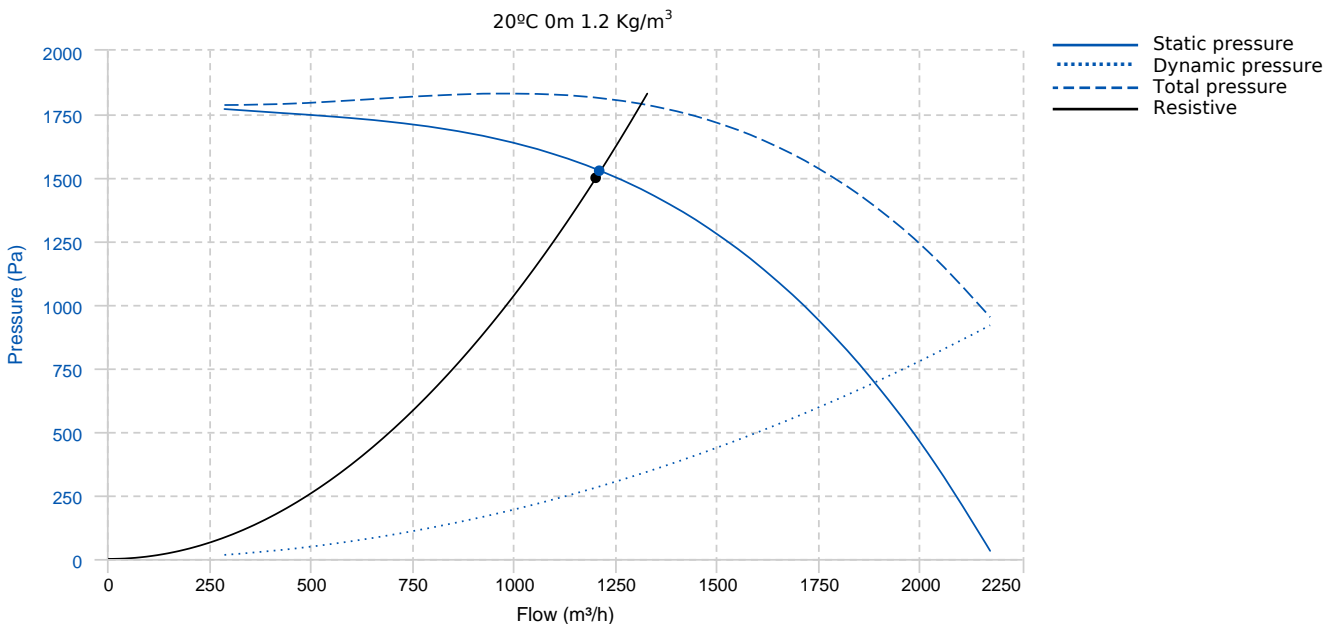
Designed for inline installation, they are suitable for:

- Industrial applications, extraction or injection of air.
- Cooling of machines and parts.
- Clean and slightly dusty air transport.
- Maximum working temperature: carried air: 130°C, environment: 60°C for three phase motors and 50°C for single phase motors.

UNDER REQUEST:

- Special voltages.
- Position: LG 0, LG 45, LG 90, LG 135, LG 180, LG315.

PERFORMANCE CURVE



Design point

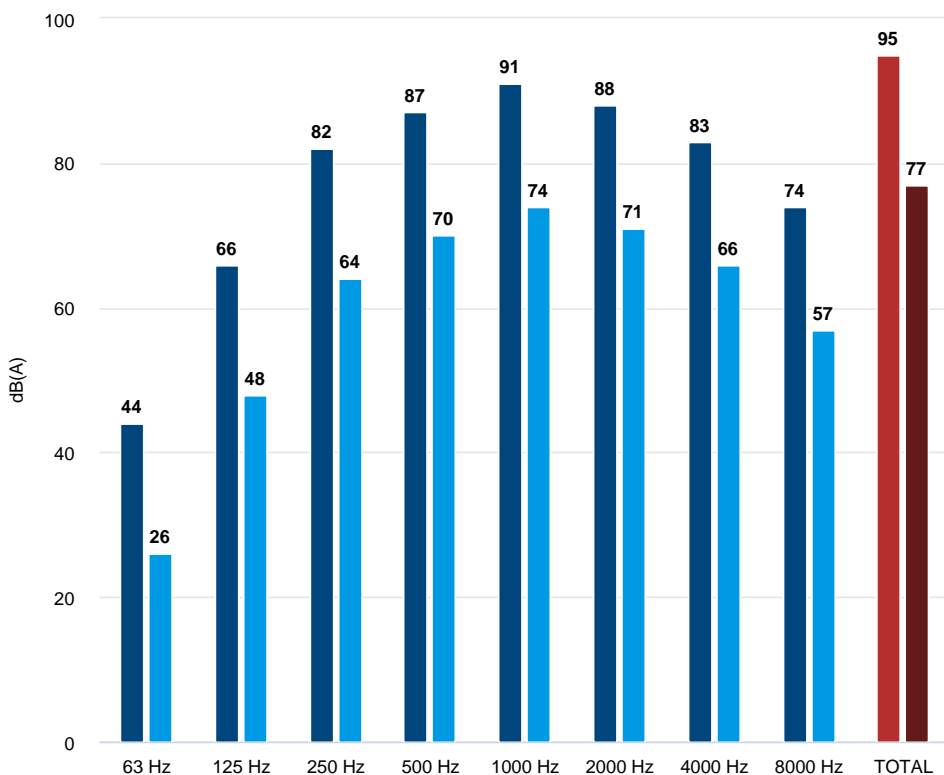
Flow (m³/h)	1200	Pressure (Pa)	1500
-------------	------	---------------	------

Service point							
T.max (°C)	130	Q (m³/h)	1210.73	Ps (Pa)	1526.93	Pd (Pa)	286.28
Pt (Pa)	1813.22	Speed (m/s)	21.85	Pabs (kW) 1.2 kg/m³	1.44	SFP (W/l/s) 1.2 kg/m³	4.28

TECHNICAL DATA

Fan							
RPM	2840	Approx. weight	30 kg	Max. Flow	2180 m³/h		
Motor							
Power	2,2 kW	RPM	2840	I max. (230V)	7,97 A	I max. (400V)	4,58 A
Size	90L	Approx. weight	25 kg	Efficiency (%)	85.9 %	FP	0.83

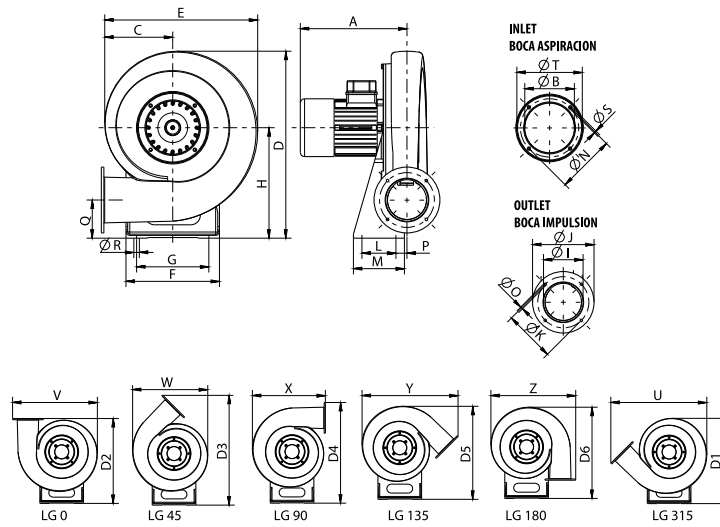
ACOUSTIC DATA



Sound power	
63 Hz	44
125 Hz	66
250 Hz	82
500 Hz	87
1000 Hz	91
2000 Hz	88
4000 Hz	83
8000 Hz	74
TOTAL	95

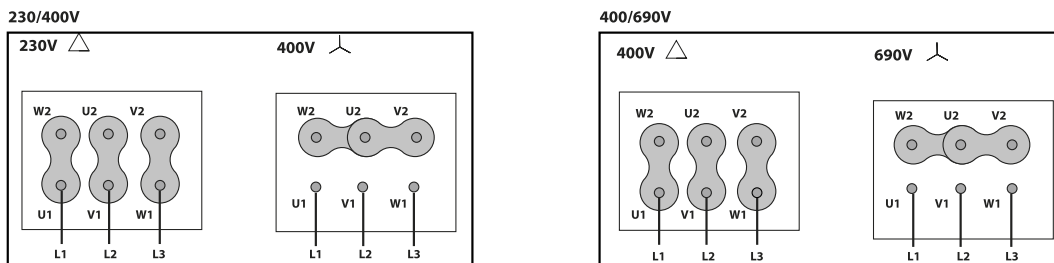
Sound pressure 3m (in) Q=2	
63 Hz	26
125 Hz	48
250 Hz	64
500 Hz	70
1000 Hz	74
2000 Hz	71
4000 Hz	66
8000 Hz	57
TOTAL	77

DIMENSIONS



Dimensions (mm)									
A	320	B \varnothing	160	C	193	D	530	D1	518
D2	513	D3	668	D4	620	D5	568	D6	555
E	428	F	240	G	190	H	323	I	140
J	200	K	175	L	120	M	160	N \varnothing	180
O \varnothing	10,2	P	18,5	Q	122	R \varnothing	13	S \varnothing	M6
T \varnothing	215	U	570	V	510	W	445	X	428
Y	570	Z	510						

WIRING DIAGRAM



ACCESSORIES



SAFETY SWITCH
INT 25 3P A
REF: INT253PA



INLET PROTECTION GUARD FOR CENTRIFUGAL FANS
RA 16/6
REF: 253111901



ANTI-VIBRATING FLANGE 400^ø/2H
BA-400 15/16
REF: 960002067



ANTI-VIBRATION JOINT
JE 45
REF: 300719201



CONNECTION FLANGE
AC 150
REF: 960003204



OUTLET PROTECTION GUARD
RBS 31
REF: 960000383



FREQUENCY SPEED CONTROLLER
SFC 230 I 10A *
REF: SFC230I0010



FREQUENCY SPEED CONTROLLER
SFC 400 III 5A *
REF: SFC400III5



ANTI-VIBRATION RUBBER BLOCK
AVR (GENERIC)

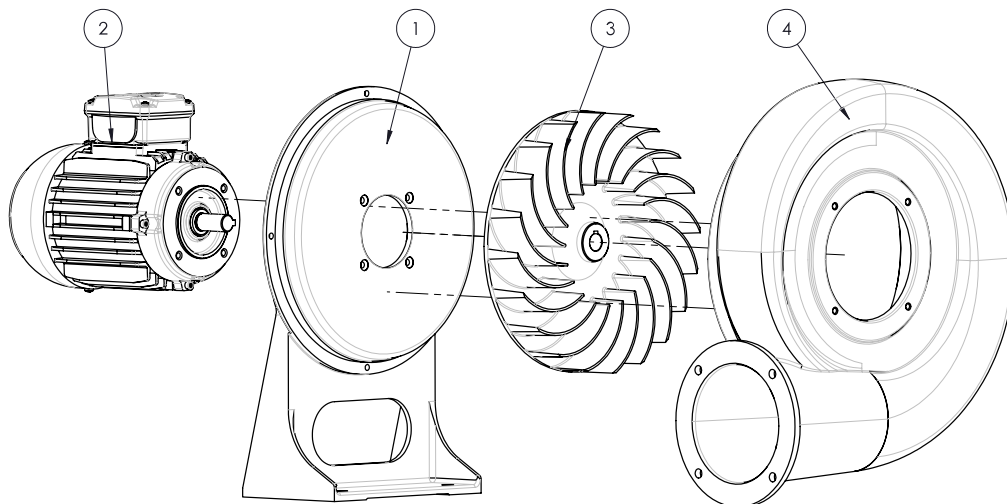


ANTI-VIBRATION SPRING BLOCK
AVS (GENERIC)



ACOUSTIC CABINS FOR CENTRIFUGAL FANS
CA (GENERIC)

SPARE PARTS



	Code	Model	Qty
1	R-153601751	BASE SUPPORT MOTOR MA31	x1
2	721001052	MOTOR 2,2kW T2 B5 230/400V	x1
3	R-153603651	TURBINE MA31 LG	x1
4	R-153601771	CASING MA31	x1